

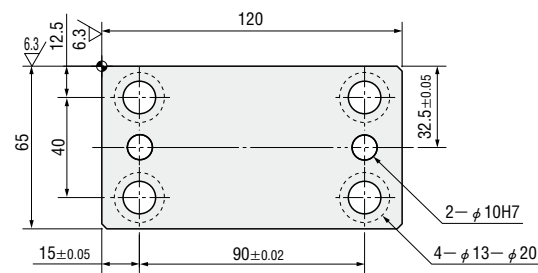
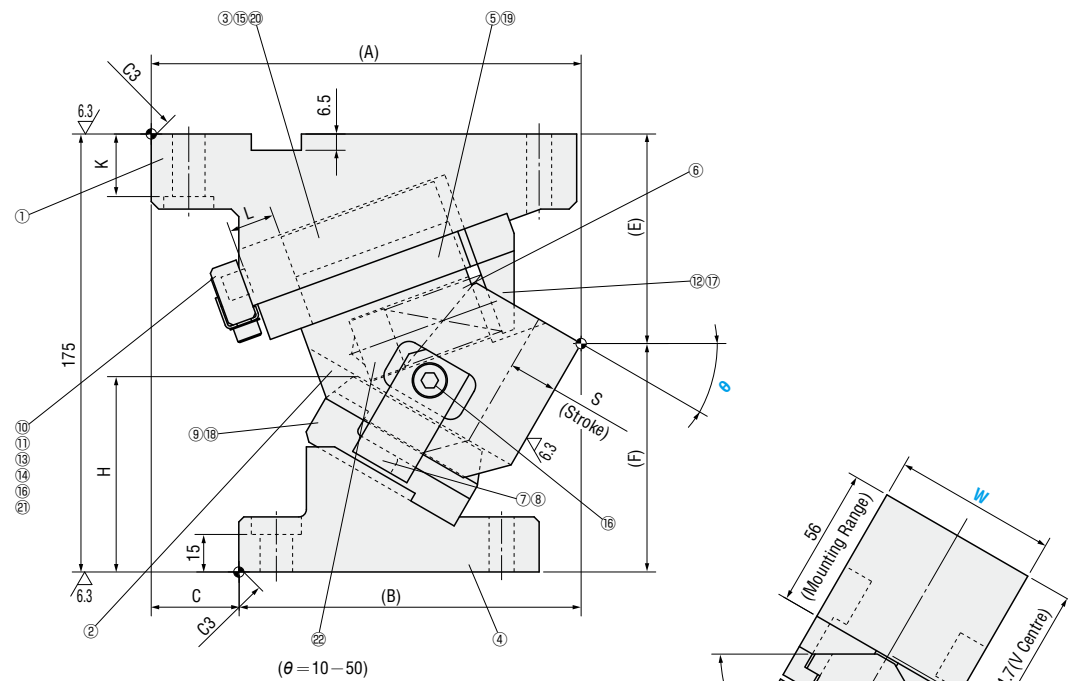
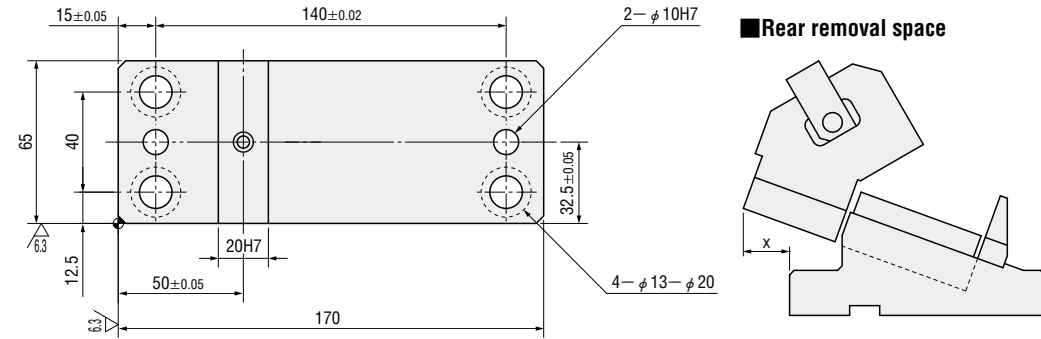
# RIGID FLYING CAM UNITS

— MGFL • MEFL —



MGFL65 ( $\theta=00-50$ )  
MEFL65 ( $\theta=00-50$ )

(Economy type)



Components table P.1287

W	$\theta$	A	B	C	E	F	H	K	L	x
65	00	170	100	70	60	115	58	25	23.3	15
	05	170.36	105.36	65	67.22	107.78	57.1		22	21
	10	175.07	112.57	62.5	69.88	105.12	61.1		20	
	15	174.09	119.09	55	72.92	102.08	65.3			18
	20	172.4	127.4	45	76.28	98.72	70.2	15	31	
	30	171.78	136.78	35	83.71	91.29	78.1			34
	40	163.07	143.07	20	91.63	83.37	84.5		16	
	50	170	151.22	5	104.5	70.5	91.1	33		

Slide Stroke S	Working force KN (tonf)		Spring load N (kgf)			Total weight kg	Catalog No.	W	$\theta$	
	Standard working force	Max. working force	Preload	5mm before bottom dead center	Max. load					
15.0	29.4 (3.0)	58.8 (6.0)	245 (25.0)	638 (65.0)	835 (85.1)	10.7	MGFL MEFL (Economy type)	65	00	
15.6			278 (28.4)	658 (67.1)		10.4			05	
15.6			237 (24.1)	654 (66.7)	639 (65.2)	829 (84.5)			10.2	10
17.0					669 (68.2)				9.9	15
18.4			176 (17.9)	672 (68.6)	648 (66.0)	810 (82.6)			9.9	20
19.5									697 (71.1)	9.6
23.1			246 (25.1)	697 (71.1)	672 (68.6)	810 (82.6)			9.5	40
24.9									697 (71.1)	9.9

Order   -

Days to Ship **Quotation**

Price **Quotation**

Alterations   -  -

Alteration	Code	Spec.
	K	Add locating key (With 1 hexagon socket head cap screw M8×15) 