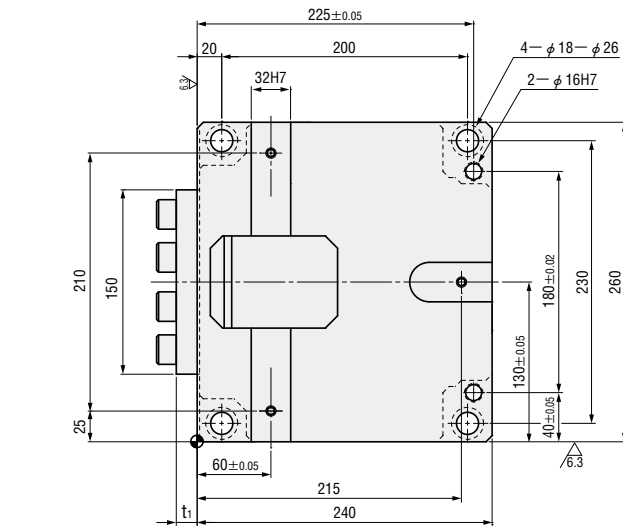


# V SHAPE GUIDE FLYING CAM UNITS FOR TRIM & FLANGE

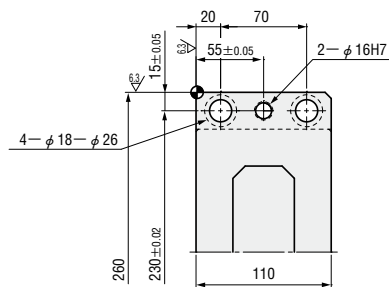
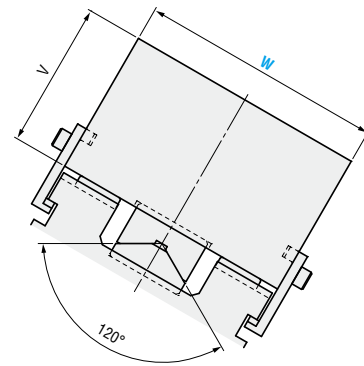
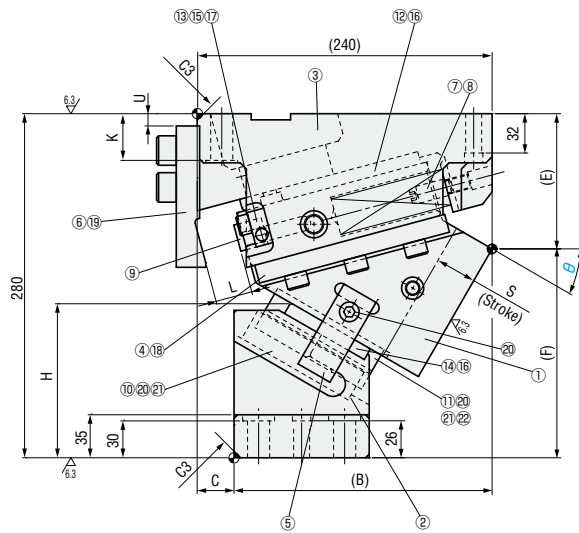
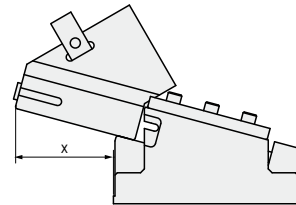
—MGFVT • MEVTN—



MGFVT200 ( $\theta=00-70$ )  
MEVTN200 ( $\theta=00-70$ )  
(Economy type)



■ Rear removal space



■ Components table P.1257

W	$\theta$	B	C	E	F	H	K	L	U	V	t <sub>1</sub>	x
200	00	160	80	85	195	90	38	40	55	100	17	83
	10	180	60	90	190	113.8			35			96
	20	190	50	110	170	118.2		32	15		18	116
	30	210	30			125.4	10	120	17	127		
	40			115	165	139.8				130		
	50	230	10	120	160	149.7	30	0	140	16	132	
	60	240	0	145	135	179.3					20	142
70												

Slide Stroke S	Working force KN (tonf)		Spring load N (kgf)			Total weight kg	Catalog No.	W	$\theta$	
	Standard working force	Max. working force	Preload	5mm before bottom dead center	Max. load					
28.3	93.2 (9.5)	186.3 (19.0)	630 (64.2)	4775 (487.0)	5670 (578.2)	82.9	MGFVT MEVTN (Economy type)	200	00	
33.3				4914 (501.1)		77.1			10	
30.9			442 (45.0)	4387 (447.3)	5152 (525.4)	77.5			20	
33.5			353 (36.0)	5645 (575.6)	5645 (575.6)	4851 (494.7)			78.4	30
39.0						4974 (507.3)			72.8	40
46.7						5080 (518.0)			73.0	50
60.0						5204 (530.6)			75.3	60
58.5	1104 (112.6)	5145 (524.6)				5520 (562.9)	73.6	70		

Order

Days to Ship

Price

Alterations

Alterations	Code	Spec.
	K	Add 3 locating keys (With 3 hexagon socket head cap screws M8×15) 
	KA	Add 3 stepped locating keys (With 3 hexagon socket head cap screws M8×15) 