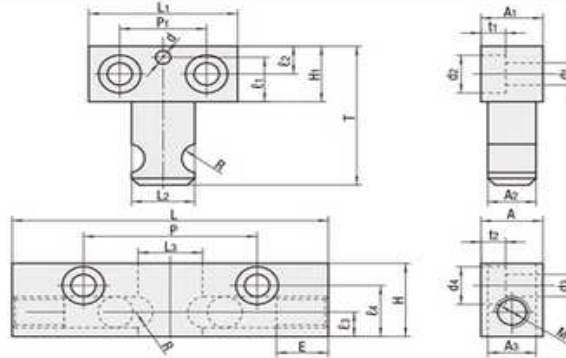


# SLIDE LOCK SETS

—BOLT ADJUSTMENT TYPE/SIMPLE TYPE—

## C—MPSLB (Bolt adjustment type)

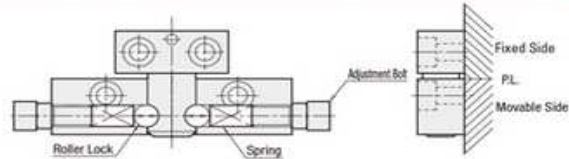


M Material S50C  
A CB 2 pcs.

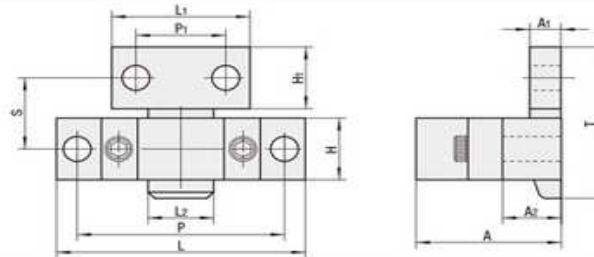
Part No.	Max. usable load (2 sets under normal temp)	L1	P1	ℓ1	ℓ2	T	H1	L2	t1	A1	d	d2	d1	A2	R	L	P	L3	ℓ3	ℓ4	H	E	t2	A	d4	d3	A3	M	
Type	No.																												
C—MPSLB	300	2942N (300kg)	40	25	14	12	48	20	17.5	6.5	20.5	5	10.5	6.5	12	R4.25	88	60	18	10	21	28	20	6.5	20.5	11	6.5	12.5	M12X1.7
	500	4902N (500kg)	60	35	20	12.5	62.5	25	25.5	10	30	6	17	10	19.5	R6.5	127.5	70	26	11	23	33	21	10	30	17	10	20	M14X2.0

### Structure and Usage

- Adjust the opening and closing force of the parting lock set using an Allen wrench. The load is maximum when the adjustment bolt is fully tightened.
- Make sure to assemble the right and left units symmetrically for well balanced operation.
- Mount it in parallel to the parting line.



## C—MPSL (Simple Type)



M Material SCM21  
A CB 2 pcs.

Part No.	Max. usable load (2 sets under normal temp)	L1	P1	H1	A1	A2	L2	A	T	L	P	H	S	Bolt Hole	
Type	No.														
C—MPSL	250	2451N (250kg)	40	26	20	9	16.5	19.5	41.5	49	72	60	20	23	M 8
	400	3922N (400kg)	50	30	22	12	20	29	48	73	113	90	30	38	M12

⊕ The upper end of the No. 400 model is a countersunk bolt.



Order

Part No.

C—MPSLB 500  
C—MPSL 250



Days to Ship

•C—MPSL

Stock

•C—MPSLB

6 Days

### Structure and Usage

- Adjust the opening and closing force of the parting lock set using an Allen wrench. The load is maximum when the adjustment bolt is fully tightened.
- Make sure to assemble the right and left units symmetrically for well balanced operation.
- Mount it in parallel to the parting line.
- ⊕ Make sure to tighten the fixing bolts to avoid the failure of the set due to loosening bolts.

