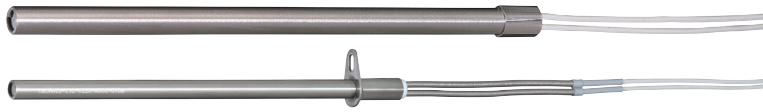


CARTRIDGE HEATERS WITH LEAD WIRE BOTTOM REINFORCED TYPE

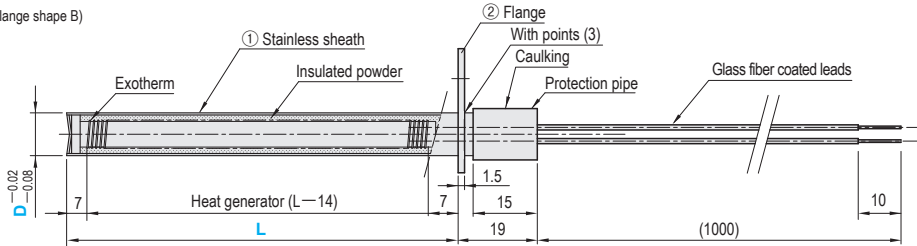
-L, W, FLANGE SELECTION TYPE-

RoHS10

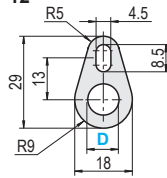


※When alteration SP is used

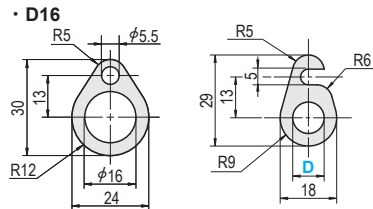
MNCHN (No flange)
MNCHA (Flange shape A)
MNCHB (Flange shape B)



MNCHA (Flange shape A)
 • D8~12



MNCHB (Flange shape B)



① Stainless sheath
 ② Flange

M SUS304

Lead heat resistance temperature 180°C

Ⓢ Installation method of flange is caulking or welding (3 points).

Watt density (W/cm ²)	Part Number		L 1 mm increments	V (Voltage) selection	W (Wattage) 10W increments
	Type	D			
2 ≤ W/cm ² ≤ 15 W/cm ² = W / {D × (L - 14) × 3.14 / 100}	MNCHN (No flange)	8	50~400	200 220	50~1100
	MNCHA (Flange shape A)	10			50~1600
	MNCHB (Flange shape B)	12			50~1800
	MNCHN (No flange)	*16	50~600	50~2000	
	MNCHA (Flange shape A)				

Ⓢ Specify the wattage such that the W density (W/cm²) is within the range 2 ≤ W/cm² ≤ 15. ✖ * MNCHB: Not available for D16



Order

Part Number	L	V	W
MNCHN8	150	V200	W400
MNCHA12	300	V220	W1400
MNCHB10	200	V200	W600



Alterations

Part Number	L	V	W	(JC · M4 · G4 · SP)
MNCHN8	200	V200	W600	JC2
MNCHB10	400	V220	W1400	JC2 - M4



Days to Ship

Quotation



Price

Quotation

Part Number	Unit Price (1~9 pcs)												
	Type	D	L50	L101	L151	L201	L251	L301	L351	L401	L451	L501	L551
MNCHN (No flange)	8												
	10												
	12												
	16												
MNCHA (Flange shape A)	8												
	10												
	12												
MNCHB (Flange shape B)	12												
	16												

Quotation

Ⓢ D16 is for MNCHN and MNCHA.

Features

- Can prevent disconnection fault by reinforcing the bottom part of lead wire.
- Can save storage space as length from flange to the lead wire bottom is short.
- By designating alteration SP and protecting lead with spring, the bending force applied on the lead is relieved and breakage will not occur easily.

COMPONENTS FOR MOLD COOLING AND TEMPERATURE CONTROLLING SYSTEMS