

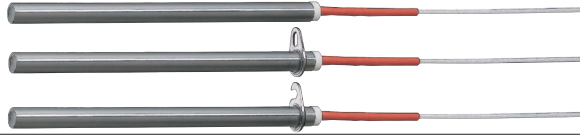
# CARTRIDGE HEATERS

-L DIMENSION • WATTAGE • FLANGE SELECTION-

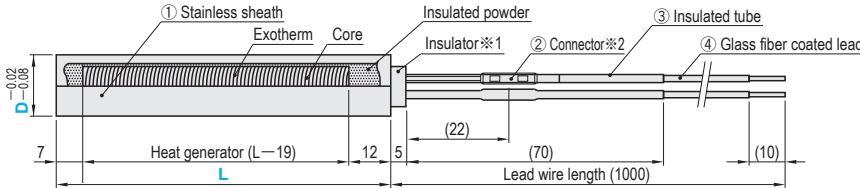
Alteration price are also applied to quantity discount, refer to P.513

Refer to P.354 for new release lubricant seizure inhibitor

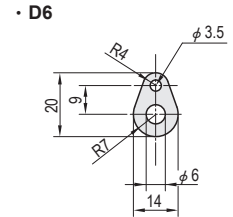
RoHS10



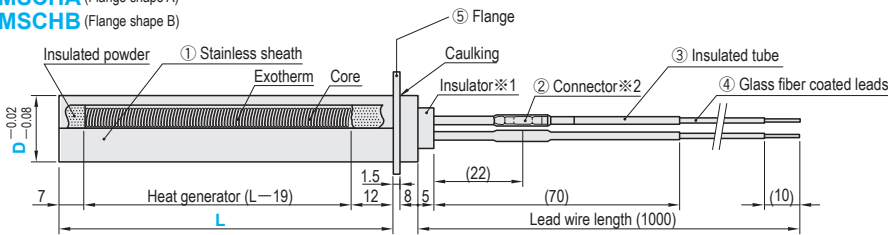
**MSCHN** (No flange)



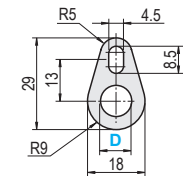
**MSCHA** (Flange shape A)



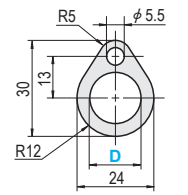
**MSCHA** (Flange shape A)  
**MSCHB** (Flange shape B)



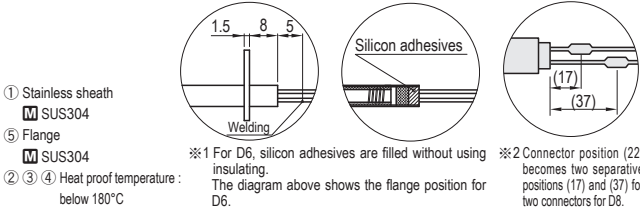
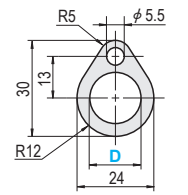
• D6



• D8~12



• D14~16



- ① Stainless sheath
- SUS304
- ⑤ Flange
- SUS304

※1 For D6, silicon adhesives are filled without using insulating. The diagram above shows the flange position for D6.

※2 Connector position (22) becomes two separate positions (17) and (37) for two connectors for D8.

W density (W/cm <sup>2</sup> )	Part Number		L 1 mm increments	V (Voltage) selection	W (Wattage) 10W increments	
	Type	D				
2 ≤ W/cm <sup>2</sup> ≤ 15 W/cm <sup>2</sup> = W / (D × (L - 19) × 3.14 / 100)	MSCHN (No flange)	*6	50~200	200 220	50~510	
		8	50~400		50~1100	
		10				
	MSCHA (Flange shape A)	*12	50~600		200 220	50~2000
		*14				
		*15				
	MSCHB (Flange shape B)	*16				

⊙ Specify the wattage such that the W density (W/cm<sup>2</sup>) is within the range 2 ≤ W/cm<sup>2</sup> ≤ 15. ⊙ MSCHB is not available for \*D6 • D14 • D15 • D16.



Order

Part Number	L	V	W
MSCHN8	150	V200	W400
MSCHA12	300	V220	W1400
MSCHB10	200	V200	W600



Days to Ship

**Quotation**



Price

**Quotation**



Alterations



Part Number	L	V	W	(JC • M4 • G4)
MSCHN8	200	V200	W 600	JC2
MSCHB10	400	V220	W1300	JC2-M4

Part Number	Unit Price (1~9 pcs)												
	Type	D	L50 ~L100	L101 ~L150	L151 ~L200	L201 ~L250	L251 ~L300	L301 ~L350	L351 ~L400	L401 ~L450	L451 ~L500	L501 ~L550	L551 ~L600
MSCHN (No flange)	6												
	8												
	10												
	12												
	14												
	15												
MSCHA (Flange shape A)	12												
	14												
	15												
	16												
MSCHB (Flange shape B)	6												
	8												
	10												
	12												

**Quotation**

Alterations	Code	Spec.	1Code
	JC	Change the length of the lead wire. Designation method: Lead wire length (mm) JC2: 2000 JC3: 3000	<b>Quotation</b>
	M4	Fit round crimped terminal (M4) onto lead wire.	
	G4	Fit Y-type crimped terminal (M4) onto lead wire.	

⊙ Only D8 to 12 are available for MSCHB.