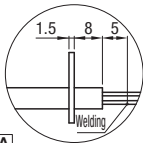
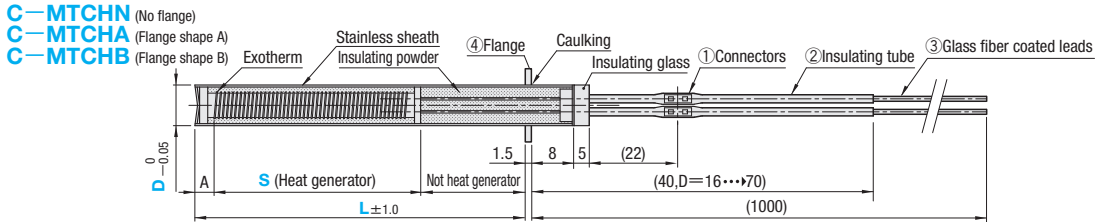
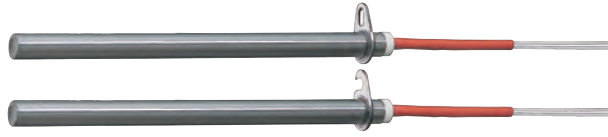
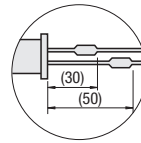


CARTRIDGE HEATERS

— HEATING TIP PART TYPE —



※1 When D=4, fill with silicone adhesive instead of insulating glass. In addition, the flange position when D=4 is as shown.



Terminal position when D=16

①②③ Heat resistance: 180°C or lower SUS304

Flange shape A

Flange shape B

• D6.5 · D8

• D10 · D12

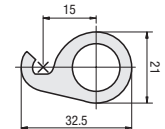
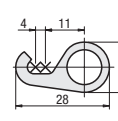
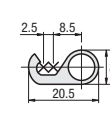
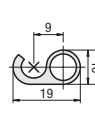
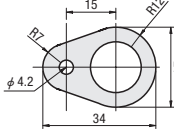
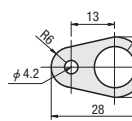
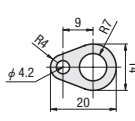
• D16

• D6.5

• D8

• D10 · D12

• D16



A	Watt density (W/cm ²)	Part No. Type	D	L		S	V (Voltage) Selection	W (Wattage) 10W increments
				1mm increments	1mm increments			
5	D=4~12 2 ≤ W/cm ² ≤ 15 W/cm ² = W / [D × S × 3.14 / 100] D=16 2 ≤ W/cm ² ≤ 15 W/cm ² = W / [D × S × 3.14 / 100]	C-MTCHN (No flange) C-MTCHA (Flange shape A) C-MTCHB (Flange shape B)	*4	50 ~ 140		30 ~ 380	200 220	50 ~ 240
			6.5	50 ~ 350				50 ~ 1000
			8	50 ~ 400				50 ~ 1450
			10	50 ~ 500				50 ~ 2300
10			12	50 ~ 600				50 ~ 3300
			16	60 ~ 1000	30 ~ 580		50 ~ 7300	

Specify the wattage such that the W density (W/cm²) is within the range 2 ≤ W/cm² ≤ 15.

*C-MTCHA, C-MTCHB: Not available for D4

The length of some non-heat generation sections may not be possible, so be sure to confirm them first.



Order

Part No. - L - S - V - W
C-MTCHN 8 - 150 - S100 - V200 - W 300



Days to Ship

12 Days



Price

Order / Quote:
WOS: <https://in.misumi-ec.com/>
TEL: +91-124-468-8800 E-mail: cs@misumi.co.in



Alterations

Part No. - L - S - V - W - (JC · M4 · G4)
C-MTCHB 10 - 400 - S200 - V220 - W1400 - JC2 - M4

Alteration	Code	Spec.
	JC	Change the length of the lead wire. Not available for D4 Designation method Lead wire length (mm) JC2 2000 JC3 3000

Alterations	Code	Spec.
	M4	Fit round crimped terminal (M4) onto lead wire.
	G4	Fit Y-type crimped terminal (M4) onto lead wire.

Features: The heater generates heat only with the preheated core, which prevents sintering due to uneven thermal expansion of the guide portion.