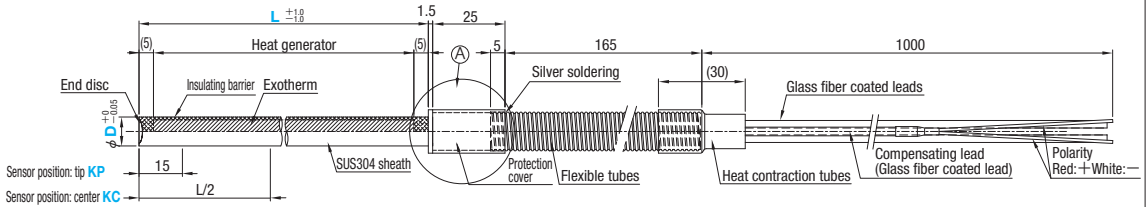


CARTRIDGE HEATERS

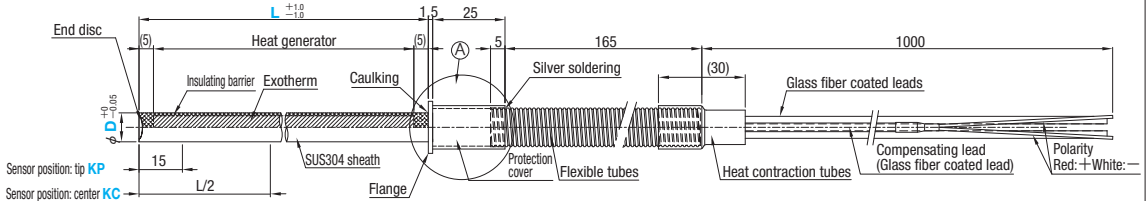
— SENSOR ATTACHED TYPE —



C—MTSJCHN

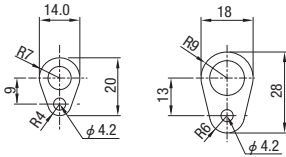


C—MTSJCHA C—MTSJCHB



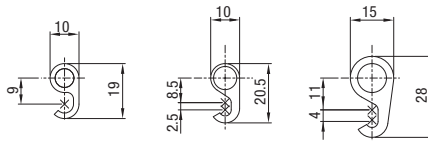
C—MTSJCHA (Flange)

- φ 6, φ 8
- φ 10, φ 12



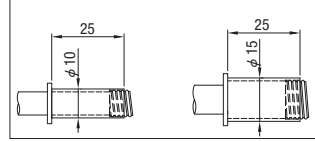
C—MTSJCHB (Flange)

- φ 6
- φ 8
- φ 10, φ 12



Section A dimension

- φ 6, φ 6.5, φ 8
- φ 10, φ 12



W Watt density (W/cm ²)	Part No.		L 1mm increments	V (Voltage) Selection	W (wattage) 10W increments	Sensir position (K type) selection
	Type	D				
2 ≤ W/cm ² ≤ 15 W/cm ² = W / {D × (L - 15) × 3.14 / 100}	C—MTSJCHN (No flange)	6	50~350	200	50~520	KP : Tip KC : Center
	C—MTSJCHA (Flange shape A)	8	50~400		50~1100	
	C—MTSJCHB (Flange shape B)	10	50~500	220	50~1600	
		12			50~1800	

Specify the wattage such that the W density (W/cm²) is within the range 2 ≤ W/cm² ≤ 15.

- **Features** : - A cartridge heater and a temperature sensor (K type) are integrated in these products.
- Ideally suited for limited space because there is no need to mount a heater and a temperature sensor separately.
- In addition, temperature control of the heater itself by the sensor prevents shorts and ignition due to abnormal heating.
- ⊙ Note: The mold temperature cannot be controlled.



Order

Part No. — L — V — W — Sensor position
C—MTSJCHA10 — 200 — V200 — W600 — KP



Days to Ship

12 Days



Price

Order / Quote:
WOS: <https://in.misumi-ec.com/>
TEL:+91-124-468-8800 E-mail:cs@misumi.co.in

Heating Items