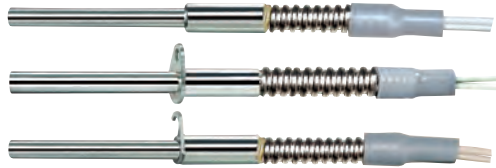
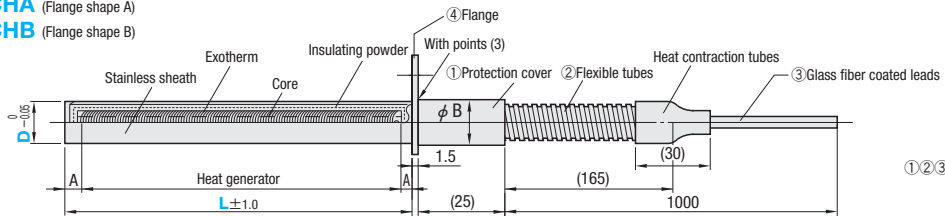


CARTRIDGE HEATERS

—LEAD PROTECTION COVER TYPE—



C—MJCHN (No flange)
C—MJCHA (Flange shape A)
C—MJCHB (Flange shape B)



①②③ Heat resistance:
 180°C or lower
 M SUS304

Flange shape A

Flange shape B

• D6.5 · D8

• D10 · D12

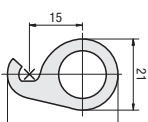
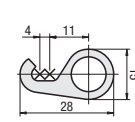
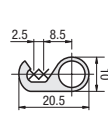
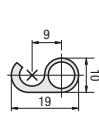
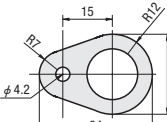
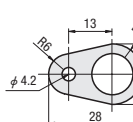
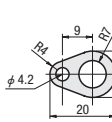
• D16

• D6.5

• D8

• D10 · D12

• D16



B	A	W Watt density (W/cm ²) D=6.5~12 2 ≤ W/cm ² ≤ 15 W/cm ² = W/(D × L - 10 × 3.14/100) D=16 2 ≤ W/cm ² ≤ 15 W/cm ² = W/(D × L - 20 × 3.14/100)	Part No. Type		D	L 1mm increments	V (Voltage) Selection	W (wattage) 10W increments
			C—MJCHN (No flange)	C—MJCHA (Flange shape A)				
10	5		C—MJCHN	C—MJCHA	6.5	30~350	200 220	50~1000
					8	25~400		50~1450
15	10		C—MJCHN	C—MJCHA	10	25~500		50~2300
					12	25~600		50~3300
22	10		C—MJCHN	C—MJCHA	16	40~1000		50~7300

Specify the wattage such that the W density (W/cm²) is within the range 2 ≤ W/cm² ≤ 15.



Order

Part No.	L	V	W
C—MJCHN 8	150	V200	W 400
C—MJCHA 12	300	V220	W1400
C—MJCHB 10	200	V200	W 600



Days to Ship

12 Days



Price

Order / Quote:
 WOS: <https://in.misumi-ec.com/>
 TEL:+91-124-468-8800 E-mail:cs@misumi.co.in



Alterations

Part No.	L	V	W	(JC·M4·G4)
C—MJCHN 8	200	V200	W 600	JC2
C—MJCHB 10	400	V220	W1400	JC2 - M4

Alteration	Code	Spec.
	JC	Change the length of the lead wire. Designation method Lead wire length (mm) JC2 2000 JC3 3000

Alterations	Code	Spec.
	M4	Fit round crimped terminal (M4) onto lead wire.
	G4	Fit Y-type crimped terminal (M4) onto lead wire.