

# MOLD COUPLING SOCKETS / PLUGS

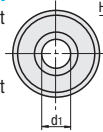
— USA TYPE —



For hose installation

**C-F120-MJTSHM**  
(Heat resistance 120°C · without self-sealing valve)

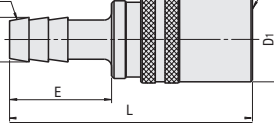
**C-F120-MJTSH**  
(Heat resistance 120°C · without self-sealing valve)



Hose fitting part

Applicable to plugs on P.237

Connection part of plug (hole diameter V)



M Brass

Applicable plug	Connection part of plug		L	Inner hole d1	Hose fitting part		Part No.	
	Hole diameter V	D1			a	E	Type	No.
Couplers for cooling-water - front end diameter V=13.5	13.5	22	54	6	10.5	25	C-F120-MJTSHM	3
				9	14			4
Couplers for cooling-water - front end diameter V=9.4	9.4	17	52	5	7.3	25	C-F120-MJTSH	2
				6	10.5			3

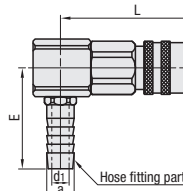
⚠ C-F120-MJTSHM, C-F120-MJTSH do not have valve. Please confirm water temperature and pressure before detachment.



For hose installation - L type

**C-F120-MJTSLM**  
(Heat resistance 120°C · without self-sealing valve)

**C-F120-MJTSL**  
(Heat resistance 120°C · without self-sealing valve)



Applicable to plugs on P.237

Connection part of plug (hole diameter V)

M Brass

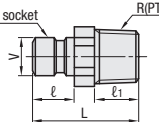
Applicable plug	Connection part of plug		L (reference)	Inner hole d1	Hose fitting part		Part No.	
	Hole diameter V	D1			a	E (reference)	Type	No.
Couplers for cooling-water - front end diameter V=13.5	13.5	22	(52)	6	10.5	(35)	C-F120-MJTSLM	3
				9	14			4
Couplers for cooling-water - front end diameter V=9.4	9.4	17	(38.5)	5	7.3	(34)	C-F120-MJTSL	2

⚠ C-F120-MJTSLM, C-F120-MJTSL do not have valve. Please confirm water temperature and pressure before detachment.



**C-JPJM**  
**C-JPJ**

\*Connection part of socket



Applicable to sockets on P.237

M Brass

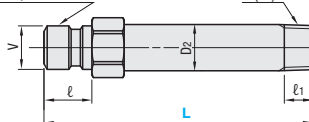
Applicable socket	Connection part of socket		L	B	Inner hole d	Taper external thread R(PT)	l1	Part No.	
	V	l						Type	No.
Couplers for cooling-water series - socket hole diameter V=13.5	13.5	15.5	30	14	6	1/8	9	C-JPJM	1
			34	14	9	1/4	13		2
			34	17		3/8	13		3
Couplers for cooling-water series - socket hole diameter V=9.4	9.4	10.4	24.5	11	6	1/8	9	C-JPJ	1
			29	14		1/4	13		2
			29	17		3/8	13		3



**C-LJPJHM**  
(Outer hexagonal shoulder long type)

**C-LJPJH**  
(Outer hexagonal shoulder long type)

\*Connection part of socket



Applicable to sockets on P.237

M Brass

Applicable socket	Connection part of socket		D1	D2	Inner hole d	Taper external thread R(PT)	l1	Part No.		L
	V	l						Type	No.	
Couplers for cooling-water series - socket hole diameter V=13.5	13.5	15.5	14	10	6	1/8	10	C-LJPJHM (Outer hexagonal shoulder long type)	1	50 75 100 125 150 175
			14	13.5	9	1/4	12		2	
Couplers for cooling-water series - socket hole diameter V=9.4	9.4	10.4	11	10	6	1/8	10	C-LJPJH (Outer hexagonal shoulder long type)	1	100 120 150
			14	13.5		1/4	12		2	



Order Part No. L  
C-F120-MJTSHM 3  
C-JPJM 2  
C-LJPJHM 2 — 100



Days to Ship



\*C-JPJM C-JPJ

\*C-LJPJH

Quotation

6 Days



Price

Order / Quote:  
WOS: <https://in.misumi-ec.com/>  
TEL: +91-124-468-8800 E-mail: cs@misumi.co.in