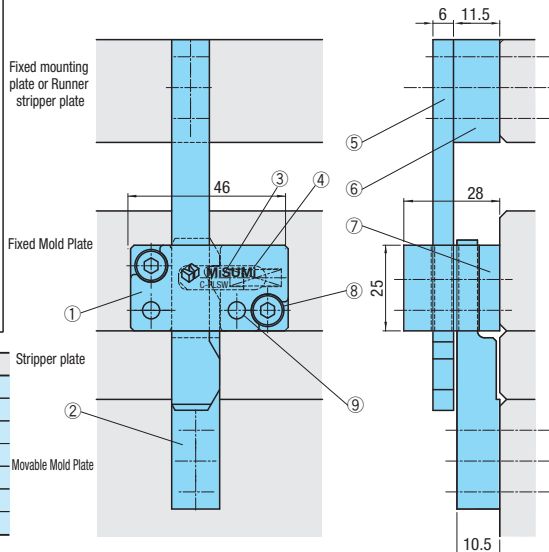


LATCH

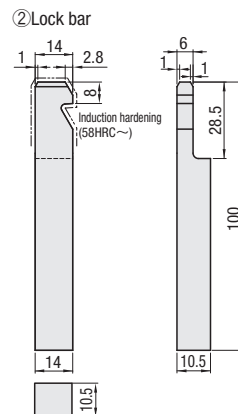
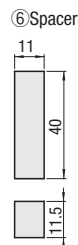
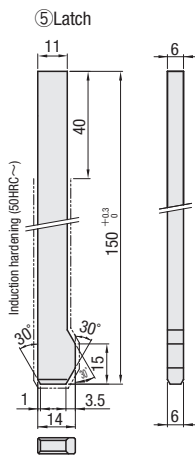
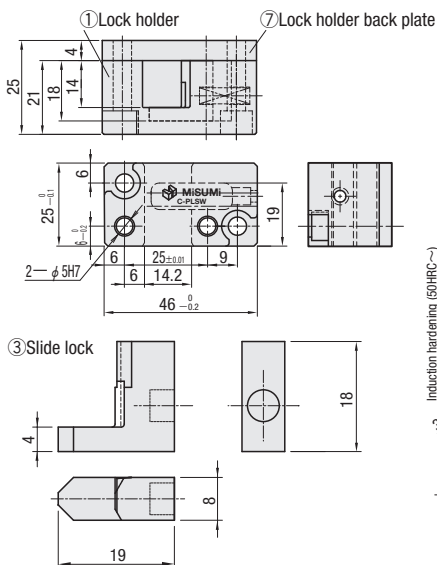
— COMPACT TYPE —

C-PLSW (①~⑨ Sets)



| Name | M | H |
|--------------------------|------------------|-----------------------------|
| ① Lock holder | | 50~55HRC |
| ② Lock bar | Alloy tool steel | 58HRC~(Induction hardening) |
| ③ Slide lock | | 58HRC~ |
| ④ Spring | SUS631 | — |
| ⑤ Latch | Alloy tool steel | 50HRC~(Induction hardening) |
| ⑥ Spacer | S45C | — |
| ⑦ Lock holder back plate | Alloy tool steel | 50HRC~ |

▲ Accessories ⑧ CB5-25(2 pcs.) ⑨ MSTM5-30(2 pcs.)



■ Latch-type parting lock sets

| Components | Part No. |
|------------|---------------|
| ①~⑨ Sets | C-PLSW |

■ Lock holder unit

| Components | Part No. |
|---------------------|------------------|
| ① ③ ④ ⑦+Accessories | C-PLSW-CH |

■ Latch long type

| Components | Part No. |
|---------------------|------------------|
| ⑤ (Length: 250mm) ⑥ | C-PLSW-RL |

⚠ If a lock set with long latch is necessary, use C-PLSW-CH · C-PLSW-RL and C-PRKW.

■ Components (Single Items)

| Components | Part No. |
|--------------|---------------|
| ② Lock bar | C-PRKW |
| ③ Slide lock | C-PRSW |
| ⑤ Latch | C-PRLW |

⚠ Consumable components lock bars, slide locks and latches can be purchased independently.



Order

Part No.
C-PLSW



Days to Ship

•C-PLSW
6 Days

•C-PLSW-CH, C-PLSW-RL
C-PRKW, C-PRSW, C-PRLW
12 Days



Price

Order / Quote:
WOS: <https://in.misumi-ec.com/>
TEL:+91-124-468-8800 E-mail:cs@misumi.co.in