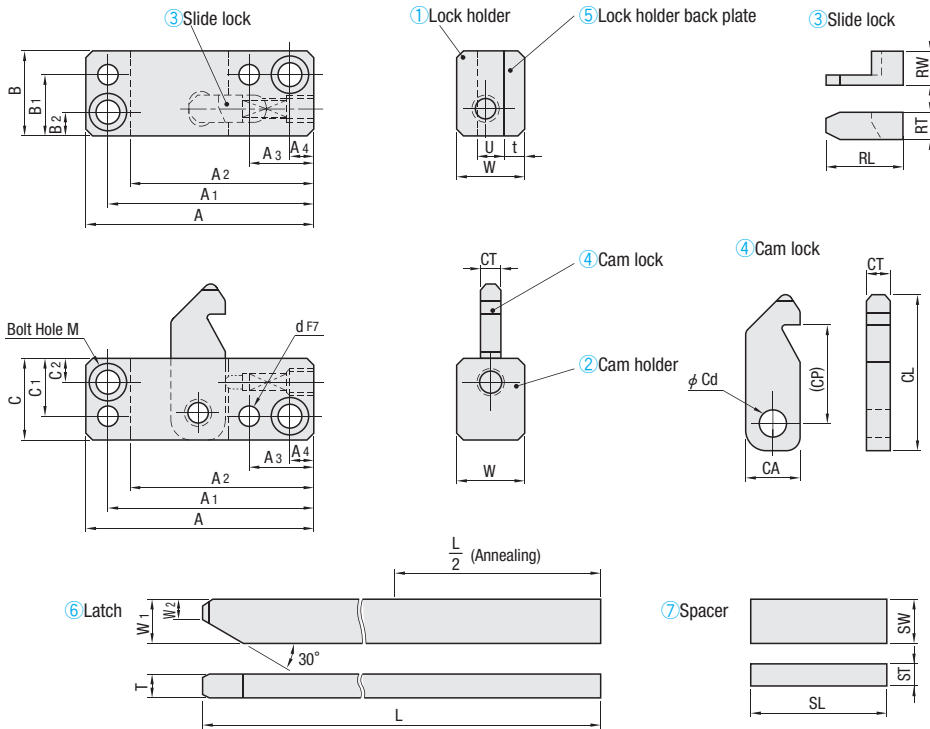
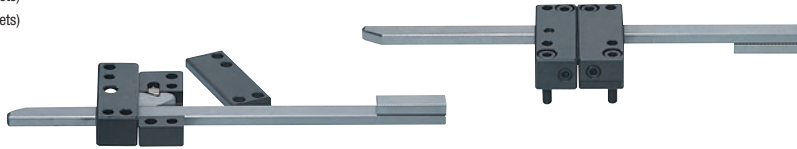


# LATCH

—CAM LOCK TYPE—

**C—PLS** (①~⑦ sets)  
**C—PLM** (①~⑦ sets)  
**C—PLL** (①~⑦ sets)



**A** Bolt 4 pcs.  
 Dowel pin 4 pcs.  
 Spring 2 pcs.

Item	① Lock holder	② Cam holder	③ Slide lock	④ Cam lock	⑤ Lock holder back plate	⑥ Latch	⑦ Spacer
<b>M</b>	S45C	S45C	SKD61	SKD61	S45C	SKD11 equivalent	S45C
<b>H</b>	Raw material	Raw material	50HRC~	50HRC~	Raw material	45HRC~ (Induction hardening)	Raw material

Part No.	① Lock holder · ② Cam holder															③ Slide lock		
	A	A1	A2	A3	A4	B	B1	B2	C	C1	C2	W	U	Bolt Hole M	d	RL	RT	RW
<b>C—PLS</b>	68	61.5	55	19	7	26	19	7	24	17	7	20	8	For M6	φ6	18	7	11
<b>C—PLM</b>	88	79	70	24	9	38	29	9	30	21	9	30	12	For M8	φ8	20	9	16
<b>C—PLL</b>	104	93	82	27	11	48	37	11	38	27	11	45	20	For M10	φ10	24	12	26

Part No.	④ Cam lock					⑤ Bottom plate	⑥ Latch				⑦ Spacer			<b>A</b> Accessories		
	CL	CP	CA	CT	Cd	t	W1	W2	T	L	SW	ST	SL	Bolt 4 pcs.	Dowel pin 4 pcs.	Spring 2 pcs.
<b>C—PLS</b>	45	28	16	7.5	8	6	13	5.9	7	250	13	6.5	40	M6—25	φ6—30	φ6—15
<b>C—PLM</b>	64	41	20	10	10	7	16	8	10	300	16	8	50	M8—35	φ8—40	φ8—20
<b>C—PLL</b>	84	53.5	25	18	13	8	20	9.5	15.5	350	20	10.2	55	M10—50	φ10—50	φ8—20