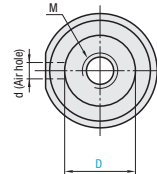
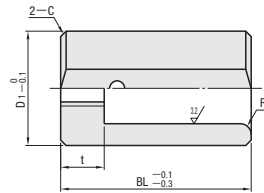


# BUSHINGS FOR PARTING LOCK / PULLER BOLTS



**C—PLBS**



**M** Material S45C  
**S** Surface Treatment Black Oxide

D1	BL	t	R	d	C	M	Part No.	
							Type	D
16	26	6	2	2.3	0.8	6	<b>C—PLBS</b> (Bushing For PL)	<b>10</b>
20	30	8	2.5	2.8	1.0	8		<b>13</b>
25	37	10	3	3	1.0	10		<b>16</b>
30	42	10	3	3	1.0	10		<b>20</b>



Order

**Part No.**

**C—PLBS 13**



Days to Ship



Stock



Price

**Order / Quote:**

WOS: <https://in.misumi-ec.com/>

TEL: +91-124-468-8800 E-mail: cs@misumi.co.in

## ■ Features

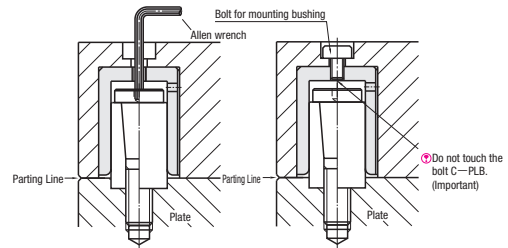
- By using C—PLBS, polishing and R-chamfering of the hole at PL installation can be omitted.
- Enables tightening/loosening of the C—PLBS parting lock's tapered bolt by using an Allen wrench (hexagonal wrench) through its bottom tap hole, making installation adjustment and maintenance easier than ever.

## ■ How to Mount

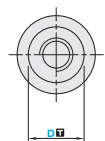
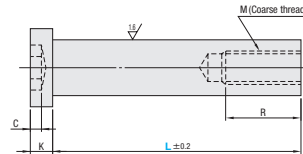
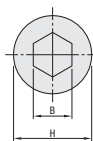
- When creating and finishing a hole for this bushing, aim at  $D \pm 0.1$  tolerance for its diameter. (The depth of hole is a level of  $BL \pm 0.5$ )
- Recommended finishing on the bushing's diameter (D) is end milling.

## ■ Notes

- Please use a bushing mounting bolt with a length which does not reach C—PLB during mold closing. Tapered bolt might be damaged by the contact of the bushing mounting bolt. Be especially careful because even slight contact damages the hole of tapered bolt for hexagonal wrench, and the removal becomes impossible.



**C—PBTN**



**M** Material S45C  
**H** Hardness 30~38HRC (Applicable with  $L \leq 200$ )  
20~30HRC (Applicable with  $L > 200$ , only induction hardening for the thread and the shoulder)

D1	C	K	H	B	M	R	Part No.		L					
							Type	D						
10	0 -0.15	4	8	16	6	M 6	<b>C—PBTN</b>	10	40	60	80	90		
									100	110	120	130	140	150
									160	170	180			
13		4	10	18	8	M 8		13	60	70	80	90	100	110
									120	130	140	150	160	170
									180	190	200	210	220	
16	0 -0.20	7	14	24	10	M10		16	100	110	120	130	140	150
									160	170	180	190	200	210
									220	230	240	250	260	280
20	0 -0.20	9	14	28	14	M12		20	120	130	140	150	160	170
									180	190	200	210	220	230
									240	250	260	280	300	
25		10	18	33	17	M16		25	170	180	190	200	210	220
									230	240	250	260	280	300



Order

**Part No.**

**C—PBTN 13 — 160**



Days to Ship

**6**

Days



Price

**Order / Quote:**

WOS: <https://in.misumi-ec.com/>

TEL: +91-124-468-8800 E-mail: cs@misumi.co.in