

STRAIGHT BLOCK SETS

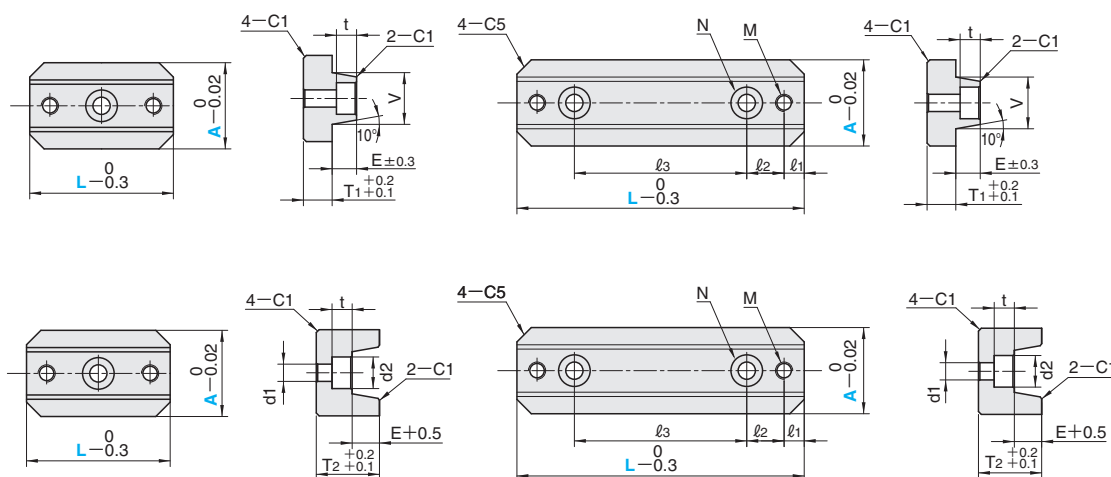
—PL SIDE FIXING TYPE—



Group	Part No.	A Tolerance	V dimension symmetry against A/B plane	M	H
Standard	C-TBSL	$\begin{smallmatrix} 0 \\ -0.02 \end{smallmatrix}$	0.008 or less	YK30 equivalent	56HRC~

■ Mounting bolt hole: 1 (L50)

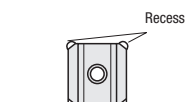
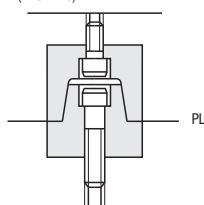
■ Mounting bolt hole: 2 (L100 · 150)



T ₂	T ₁	T	V	E	l ₁	l ₂	l ₃	Bolt Hole			Installation bolts N	Dismounting tap hole M	Part No.		L
								d ₁	d ₂	t			Type	A	
17.5	8	25.5	17	7	7	18	—	5.6	9.5	6	M5	M5	C-TBSL	25	50
22	10	32	18	8.5	6.5	13.5	60	6.6	11	8	M6	M6		30	100
25	13	38	24	10	9.5	15.5	100	8.6	14	9	M8	M8		40	150

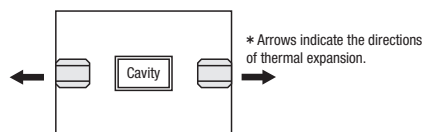
■ Usage

Mounting bolt hole: 1-2
(A25~40)



Mount the block set as shown
in the left figures.
Make sure to provide the embedding hole
with recesses as shown in the figure above.

■ Features of tapered blocks sets



- The tapered block sets are capable of offsetting the plate's thermal expansion caused in high temperature molding process for thermosetting resins, etc., thereby maintaining positioning accuracy.
- The pin type positioning method cannot thoroughly absorb thermal expansion when it takes place in directions as shown in the figure above.
- The block type will be unaffected if the groove direction is in parallel to the directions of thermal expansion as shown in the drawing above.



Order

Part No. — L
C-TBSL 30 — 100



Days
to Ship



Stock



Price

Order / Quote:

WOS: <https://in.misumi-ec.com/>

TEL: +91-124-468-8800 E-mail: cs@misumi.co.in

