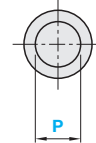
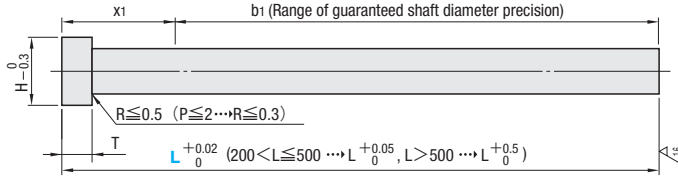
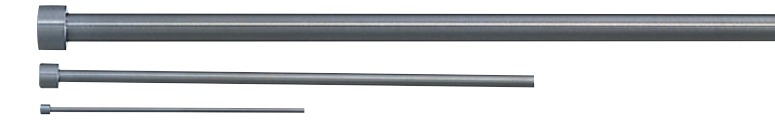
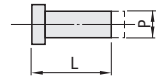


JIS Type
SKD61 equivalent
+
Nitrided

STRAIGHT EJECTOR PINS

— L DIMENSION SPECIFY TYPE —

Total length specified type



① Range of guaranteed shaft diameter precision and hardness (Details see P.61, 63)

Part No.	Head thickness	T Tolerance
C-EPN-L	4mm (T4)	$\begin{matrix} 0 \\ -0.02 \end{matrix}$ ($L > 300 \dots \begin{matrix} 0 \\ -0.05 \end{matrix}$)
C-EPJ-L	6·8mm (JIS)	$\begin{matrix} 0 \\ -0.05 \end{matrix}$

P Tolerance		1~13	15~20
L ≤ 500		$\begin{matrix} -0.01 \\ -0.02 \end{matrix}$	$\begin{matrix} -0.01 \\ -0.03 \end{matrix}$
L > 500		$\begin{matrix} -0.01 \\ -0.03 \end{matrix}$	$\begin{matrix} -0.01 \\ -0.03 \end{matrix}$

② SKD61 equivalent + Nitrided
③ Surface: 900HV~
Material: 40~45HRC

Head thickness 4mm		Head thickness JIS		Part No.		P	L				
H	T	H	T	Head thickness 4mm	Head thickness JIS						
3	4	—	—	C-EPN-L	—	1	40.00 ~ 100.00				
4						1.5	40.00 ~ 100.00				
5						2	40.00 ~ 400.00				
6						2.5					
7						3					
8						3.5					
8						8	6	C-EPJ-L	4	40.00 ~ 500.00 (600.0)	
9						9			5		
11						10			6		
15						13			8		40.00 ~ 500.00 (700.0)
17						15			10		40.00 ~ 500.00 (800.0)
21	17	12	40.00 ~ 500.00 (800.0)								
—	21	16	40.00 ~ 800.00								
—	25	20									

④ Nitriding may extend to the head as it is applied after dimension P machining.



Order

Part No. — L
C-EPN-L 3 — 125.55



Days to Ship

10 Days



Price

Order / Quote:
WOS: <https://in.misumi-ec.com/>
TEL: +91-124-468-8800 E-mail: cs@misumi.co.in



Alterations

Part No. — L — (KC · WKC...etc.)
C-EPN-L 3 — 125.55 — WKC2.25

Alteration details see P.28

Alterations	Code	Spec.	
	KC	Single flat cutting $P/2 \leq KC < H/2$	About Designation Unit for Key Flat Cutting (1) To align the key flat with the shaft diameter Unit of designation 0.05mm increments possible
	WKC	Two parallel flats cutting $P/2 \leq WKC < H/2$	(2) To designate arbitrary key flat dimensions Unit of designation 0.1mm

Alterations	Code	Spec.	
	HC	HC=0.1mm increments ① $P+1 \leq HC < H$ and $P \geq 1.5$	
	TC	TC=0.1mm increments ② $T/2 \leq TC < T$ and $P \geq 1.5$ ③ $T - TC \leq L_{max} - L$	