

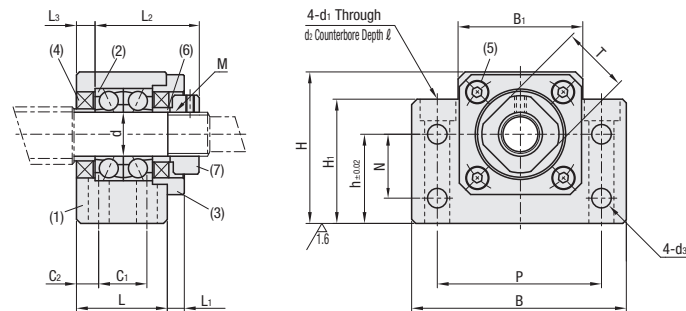
Points of comparison against similar products | For Load Rating, C-VALUE components are different from the similar products. (For details, see P.772.)
When considering adopting C-VALUE parts, select them by comparing against similar products in the specifications. P.777



Type	Material	Surface Treatment
Fixed Side only	(1)(3)	(1)(3)(6)(7)
Fixed Side and Support Side SET	(6)(7)	(1)(3)(6)(7)
C-BSFW	C-BSFW-SET	S45C SS400
		Black Oxide

Number	Part Name	Qty.
(1)	Bearing Housing	1
(2)	Overseas-made angular contact bearing Grade 5	1 Set
(3)	Cover	1
(4)	Oil Seal	2
(5)	Hex Socket Head Cap Screw	4
(6)	Collar	2
(7)	Bearing Nut (with Set Piece)	1

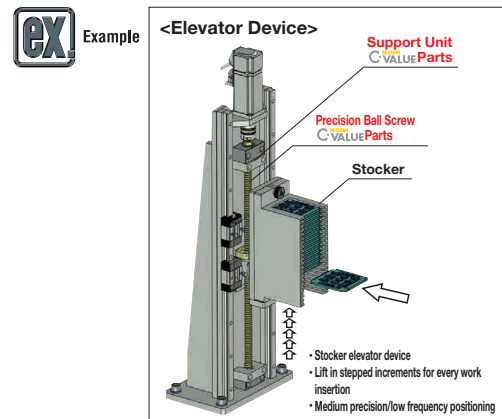
- d=6 and 8 come with one Oil Seal (4).
- Do not disassemble (1), (2), (3), (4) and (5) as they must remain as an assembled unit.
- When used together with a MISUMI ball screw, there is one support unit accessory collar spare.



Part Number	Support Side SET	d	L	L1	L2	L3	B	H	h	B1	H1	P	N	C1	C2	d1	d2	d3	l	M (Fine)	T	Oil Seal Applicable Shaft Dia.	C-BSFW Unit Price	C-BSFW-SET Unit Price	
C-BSFW	10S	-SET (Only when purchased in Sets)	10	25	5	29	5	60	39	22	34	32.5	46	15	13	6	6.6	11	5.5	5	M10x1.0	16	12		
	10																								
	12																								
	15																								
	20																								
25																									

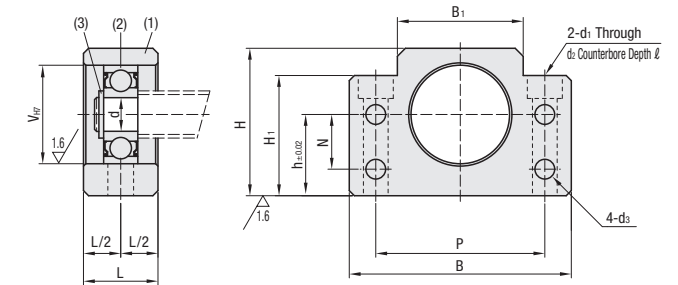
Ordering Example
Part Number
C-BSFW15 (Fixed-side single type)
C-BSFW15-SET (SET part type)

- For details of Bearings, Included Collars and Bearing Nuts in addition to mounting interface accuracies of Support Units, see P.777.
- Ball Screw Compatibility Chart P.774
- * Store Accessories with care since they are required when assembling.
- No.15 and No.20 cannot be used with MISUMI ball screws. For the applicable ball screws manufactured by other companies, see P.776, "Ball Screw / Support Unit Mapping Table - Ball Screw Shaft Diameters: Ø20, Ø28, Ø30 and Ø32."



Type	Material	Surface Treatment
C-BUFN	S45C	Black Oxide

Number	Part Name	Qty.
(1)	Housing	1
(2)	Overseas-made radial bearing	1
(3)	Retaining Ring (STWN)	1



Part Number	d	L	B	H	h	B1	H1	P	N	V	d1	d2	d3	l	Bearing Part Number	Retaining Ring	C-BUFN Unit Price
C-BUFN	10	8	60	39	22	34	32.5	46	15	22	6.6	11	5.5	5	B608ZZ	STWN8	
	12	10	20	43	25	35			18	26				1.5	B6000ZZ	STWN10	
	15	15		70	48	28	40	38	54	32				6.5	B6002ZZ	STWN15	
	20	20	26	88	60	34	52	50	70	28	42	9	14	8.5	B6004ZZ	STWN20	
	25	25	30	106	80	48	64	70	85	33	52	11	17.5	9	11	B6205ZZ	STWN25

Ordering Example
Part Number
C-BUFN15 (Support side, separate item)

- For details of Bearings, Included Collars and Bearing Nuts in addition to mounting interface accuracies of Support Units, see P.777.
- Ball Screw Compatibility Chart P.774
- * Store Accessories with care since they are required when assembling.
- No.15, 20 and 25 cannot be used with MISUMI ball screws. For the applicable ball screws manufactured by the other companies, see P.776, "Ball Screw / Support Unit Mapping Table - Ball Screw Shaft Diameters: Ø20, Ø28, Ø30, Ø32 and Ø36."

SET part overview For customers using in conjunction with fixed side and support side MISUMI recommends a SET, which allows the fixed side and support side to be ordered as one set.
5% price reduction when ordering in SETs

SET Part Number	SET parts	
	Fixed Side Part Number	Support Side Part Number
C-BSFW10-SET	C-BSFW10	C-BUFN10
C-BSFW10S-SET	C-BSFW10S	C-BUFN10
C-BSFW12-SET	C-BSFW12	C-BUFN12
C-BSFW15-SET	C-BSFW15	C-BUFN15
C-BSFW20-SET	C-BSFW20	C-BUFN20
C-BSFW25-SET	C-BSFW25	C-BUFN25

<SET parts>