

# Flat Belt Conveyor Motor Integrated Type

## 3-Groove Frame (Pulley Dia. 70mm)

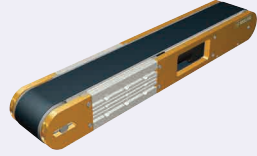
CE Compliant

\* The above compliance applies only for Single-phase 230V Motors.

Dedicated web site <http://fa.misumi.jp/cvs/>

The above site can be used to search for Conveyor components and their maintenance parts.

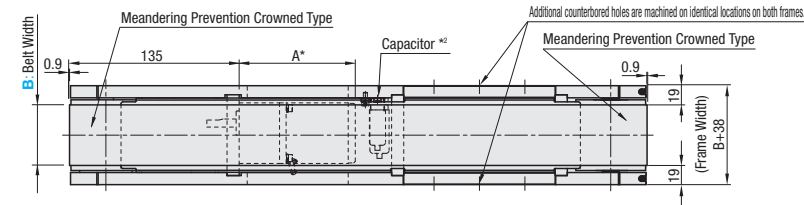
■ **Features:** Crowned pulleys prevent unwanted movement. The unit height has been reduced by half with the motor integrated in the frame.



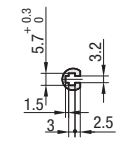
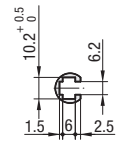
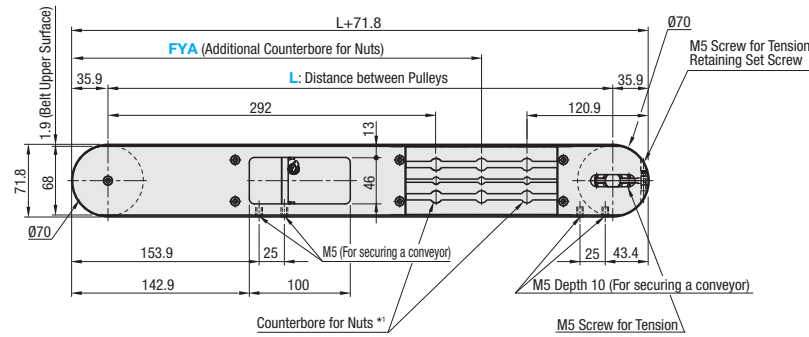
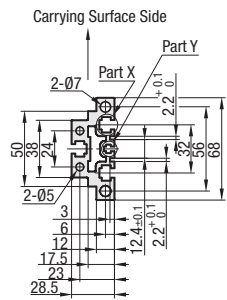
	Frame	Pulley Holder
<b>M</b> Material	Aluminum	A5052
<b>S</b> Surface Treatment	Clear Anodize	Gold Anodize

### CVSMA

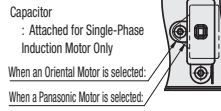
#### 6W Motor Type



#### Frame Cross Section - Enlarged (Vertically Symmetrical)



#### Motor Mounting Details



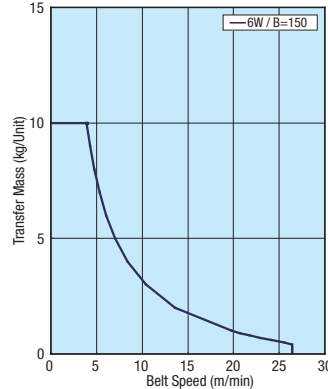
\*1. When  $L \leq 815$ , counterbores for the nuts will not be provided. However, each slot has 4 pre-inserted nuts provided.  
\*2. Single-phase induction motor only.

Ⓢ Compatible with JIS standard hex nuts.

#### \* A Dimension (Motor Overall Length) Details

Specification	Motor		Reduction Ratio	A
	Manufacturer			
Induction Motor	Panasonic	15-25	101.0	
		30-180	108.0	
	Oriental	15-18	105.0	
		25-180	115.0	
Variable Speed Motor	Oriental	15-18	115.0	
		25-180	125.0	

#### ■ Conveying Capacity



#### ■ Gearhead Reduction Ratio

Gearhead Reduction Ratio	Belt Speed (m/min)	
	50Hz	60Hz
	15	22.0
18	18.3	22.0
25	13.2	15.8
30	11.0	13.2
36	9.2	11.0
50	6.6	7.9
60	5.5	6.6
75	4.4	5.3
90	3.7	4.4
100	3.3	4.0
120	2.7	3.3
150	2.2	2.6
180	1.8	2.2

Part Number	B Selection	L 5mm Increment	Motor			Gearhead Reduction Ratio	Belt Specification	FYA (Additional Counterbores) 5mm Increment	Motor Manufacturer Selection
			Output (W)	Voltage (V)	Specification				
CVSMA	60	415-2000	6	TA115 (Single-phase)	IM (Induction Motor) SCM (Variable Speed Motor)	15 18 25 30 36	H (General Purpose, Green) W (General Purpose, White) G (For Sliding, Green) S (For Sliding, White) D (For Electronic Parts Transfer, Black) F (For Food Transfer, White) O (Oil Resistant, Navy Blue) N (Non-adhesive, White) J (No Belt)	380<FYA<L-100 * When not specified, there will be no additional counterbores.	A (Panasonic Motor) B (Oriental Motor)  * SCM (Variable Speed Motor) is not selectable for A.  R (No Motor, Gearhead)
	100					15 18 25 30 36			
150	NV (No Motor)		NM (No Motor)	NH (No Gearhead)					

- Ⓢ Connect the motor so that the belt rotates in the base direction of conveyance. For connection diagram and motor details, see P1301--.
- Ⓢ When "No motor, gearhead" is selected, the motor mounting hole pitch will vary depending on the motor's power rating. For the dimension details, see Technical Information in our Conveyor Selection web site.
- Ⓢ When "No motor, gearhead" is selected, this unit will be delivered unassembled. The customer is to assemble the unit by following instructions on the included assembly procedure manual. See our Conveyor Selection site for assembly procedures and packaging details.
- Ⓢ For Motor Manufacturer C (Taiwanese Motor), select either the H, W, G, S, D, F, O, N or J (No Belt) option.
- Ⓢ Purple Color Type of Belt is the Catalog Standard-Altered product. For details, see P1313--.

Belt Specification	Standard Belt (Body Price Only)	Optional Belt 1	Optional Belt 2	No Belt
General Purpose	H (Green), W (White), HG (Green)	-	-	J (No Belt)
For Sliding	G (Green), S (White)	-	-	
For Inclined Transfer	-	-	-	
Grip Type	-	GG (Green), GW (White)	-	
Oil Resistant	O (Navy Blue), OH (Green)	OW (White)	-	
Non-adhesive	N (White), NS (White)	NB (Sky Blue), NBG (Lime Green) HH (Green), HW (White)	-	
For Food Transfer	F (White)	KW (White), KSB (Sky Blue)	-	
For Electronic Parts Transfer	D (Black), DS (Black)	-	-	

- Ⓢ For flat belt details, see P1313--.
- Ⓢ Since only the transporting surface side is designed to be oil resistant, Oil Resistant Types are not useable on environments where it is very likely that oil adheres to the back face.

Part Number	B	Body Price 1-10 pc(s)																	
		L415-450	L455-500	L505-600	L605-700	L705-800	L805-900	L905-1000	L1005-1100	L1105-1200	L1205-1300	L1305-1400	L1405-1500	L1505-1600	L1605-1700	L1705-1800	L1805-1900	L1905-2000	
CVSMA	60																		
	100																		
	150																		

Ⓢ For orders larger than indicated quantity, please check with WOS.

Motor Spec. Price	Motor Output	Specification	A (Panasonic Motor)	B (Oriental Motor)	R (No Motor, Gearhead)
	6W	IM	SCM	-	

Belt Spec. Price	Standard Belt	Optional Belt 1	Optional Belt 2	No Belt

Ordering Example: CVSMA - 60 - 660 - 6 - T100 - IM - 36 - H - A - FYA400



Alterations Brackets for Speed Controller Included  
Post-Assembly Insertion Nuts Included  
For details of Alterations, see P1298--.