

Flat Belt Conveyors

Center Drive, 2-Groove Frame (Pulley Dia. 30mm)

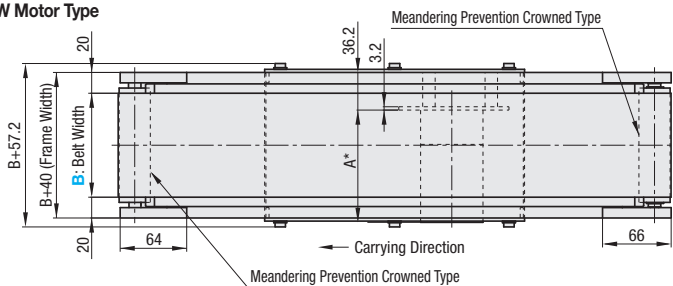
CE
Compliant

* The above compliance applies only for Single-phase 230V Motors.

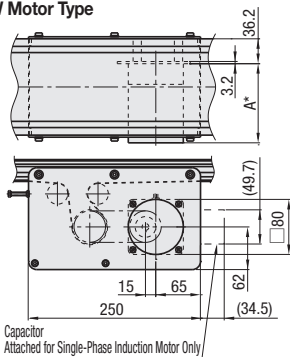
The above site can be used to search for Conveyor components and their maintenance parts.



6W Motor Type

[illegible]

25W Motor Type



- ❗ The dimensions in the diagram is for Belt Specification H (0.9mm THK.). Note that belt thickness varies by Belt Specifications. For Belt Specifications, see **P1313**~.
- ❗ On some operating environments, conveyance failure may occur.

Output (W)	Motor		Reduction Ratio	A
	Specification	Manufacturer		
6W	Induction Motor	Panasonic	5-25	101.0
			30-180	108.0
		Oriental	5-25	105.0
			30-180	115.0
		Taiwanese	5-75	114.7
			90-180	120.7
	Variable Speed Motor	Panasonic	5-25	111.0
			30-180	118.0
		Oriental	5-25	115.0
			30-180	125.0
25W	Induction Motor	Panasonic	5-75	126.9
			90-180	132.9
		Panasonic	5-180	115.0
			5-18	117.0
		Oriental	25-180	127.5
	Variable Speed Motor		5-75	129.0
	Taiwanese	90-180	136.0	
		5-180	125.0	
	Oriental	5-18	127.0	
		25-180	137.5	
		Taiwanese	5-75	139.5
			90-180	146.5

Belt Speed (m/min)	Transfer Mass (kg/Unit) for 6W/B=300	Transfer Mass (kg/Unit) for 25W/B=300
0	10	15
5	5	15
10	2.5	15
15	0.5	10
20	0	7
30	-	4
40	-	3
50	-	2
60	-	0

Gearhead Reduction Ratio	Belt Speed (m/min)	
	50Hz	60Hz
5	47.1	56.5
7.5	31.4	37.7
9	26.2	31.4
12.5	18.8	22.6
15	15.7	18.8
18	13.1	15.7
25	9.4	11.3
30	7.9	9.4
36	6.5	7.9
50	4.7	5.7
60	3.9	4.7
75	3.1	3.8
90	2.6	3.1
100	2.4	2.8
120	2.0	2.4
150	1.6	1.9
180	1.3	1.6

Part Number	B 1mm Increment	L 5mm Increment	Motor					Belt Specification	Motor Manufacturer Selection		
			Output (W)	Voltage (V)	Specification	Gearhead Reduction Ratio					⚡ The prices vary by manufacturer.
CVGN	30~300	355~2000	6 25	TA115 (Single-phase)	IM (Induction Motor) SCM (Variable Speed Motor)	5 18 60 150	7.5 25 75 180	9 30 90 120	12.5 36 100 120	W (General Purpose, Green) H (General Purpose, White) G (For Sliding, Green) S (For Sliding, White) D (For Electronic Parts Transfer, Black) F (For Food Transfer, White) O (Oil Resistant, Navy Blue) N (Non-adhesive, White) J (No Belt)	A (Panasonic Motor) B (Oriental Motor) C (Taiwanese Motor)
			25	SA220 (3-Phase) SA230 (3-Phase)	IM (Induction Motor) INV (Induction Motor + Inverter)	⊗ 5~9 not applicable for 6W Motor					* For C, the conveyance speed may decrease by approx. 20%.
			6 25	NV (No Motor)	NM (No Motor)	NH (No Gearhead)					* When A or B is selected as the Motor Manufacturer Option, choose a belt from Belt Specification table below.

Belt Specification	Standard Belt (Body Price Only)	Optional Belt 1	Optional Belt 2	No Belt
General Purpose	H (Green), W (White), HG (Green)	-	HY (Yellow Green), HBN (Sky Blue)	J (No Belt)
For Sliding	G (Green), S (White)	-	-	
For Inclined Transfer	LG (Green), LW (White)	-	-	
Grip Type	-	GG (Green), GW (White)	GSN (Green)	
Oil Resistant	O (Navy Blue), OH (Green), OG (Green)	OW (White)	ON (White)	
Non-adhesive	N (White), NS (White)	NB (Sky Blue), NBG (Lime Green), HH (Green), HW (White)	NWN (White), NSN (Sky Blue), NGN (Lime Green), HGB (Green), HBW (White), BW (White)	
For Food Transfer	F (White)	KW (White), KSB (Sky Blue), PHB (Sky Blue)	PHN (Sky Blue), PWN (White), KWN (White)	
For Electronic Parts Transfer	D (Black), DS (Black)	-	DG (Black)	

[illegible]

Motor Spec. Price	Motor Output	Specification	A (Panasonic Motor)	B (Oriental Motor)	C (Taiwanese Motor)	R (No Motor, Gearhead)
	6W	IM				
	25W	SCM				
	25W	INV				

Belt Spec. Price	Standard Belt	Optional Belt 1	Optional Belt 2	No Belt



Part Number	B	L	Motor				Belt Specification	Motor Manufacturer Selection
			Output	Voltage	Specification	Gearhead Reduction Ratio		
CVGN	90	1440	25	T200	IM	50	H	A



Specify Drive Section Position
Additional Counterbores
Roller Edge
Motor Cover with Window
Brackets for Speed Controller Included
Post-Assembly Insertion Nuts Included
Motors with Electromagnetic Brake
Stands (Legs)

For details of Alterations, see **P.1298~.**