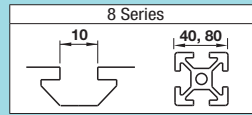


Thin Brackets

For 8 Series (Slot Width 10mm) Aluminum Extrusions



■ Features: Thin Extruded Brackets with space saving design.

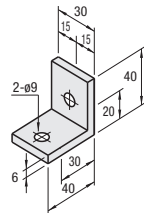
Thin Brackets



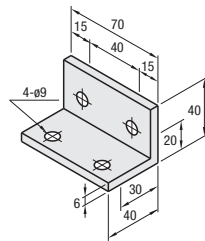
Type	Material	Surface Treatment
HBLSS 8	A6N01SS-T5	Anodize
HBLSSB8	A6N01SS-T5	Black Anodize

RoHS10

HBLSS8
HBLSSB8
(Black Anodize)

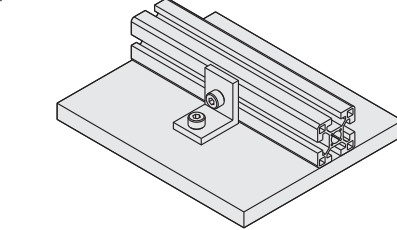


HBLSD8



Part Number	Mass (g)	Applicable Screw	T Nut	Quantity	Allowable Load (N)	Unit Price (1-99 pc(s))	Volume Discount Rate (100-200)
HBLSS8	34	CBM8-15	HNTT8-8	2	2	1666	
HBLSSB8* (Black Anodize)	34	CBM8-15	HNTT8-8	2	2	1666	
HBLSD8	80	CBM8-15	HNTT8-8	4	4	2352	

* For repairing black anodizing, refer to P846.



Ordering Example **Part Number** - **HBLSS8**



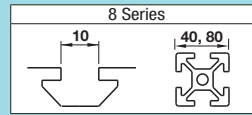
Alterations **Part Number** - (SET, SST, SEU, SSU, SEP, SSP, SEC)
HBLSS8 - SET

Alterations	Code	Spec.	Applicable Bracket
Applicable Screws and Nuts Set	SET	Applicable screws and nuts for fixing the brackets on extrusions come in a set. (Adds to the bracket price.) (Ex.) When HBLSS8 is specified: Code Screw Nut SET CBM8-15 HNTT8-8 SST SCB8-15 HNTTSN8-8 SEU CBM8-15 HNTU8-8 SSU SCB8-15 SHNTU8-8 SEP CBM8-15 HNTTP8-8 SSP SCB8-15 SHNTP8-8 SEC HCBST8-20 HNTT8-8 *When specifying other than HBLSS8, check for the applicable screws and nuts.	HBLSS8
	SEU		HBLSSB8
	SSU		HBLSSB8
	SEP		HBLSSB8
	SSP		HBLSSB8
	SEC		HBLSSB8
	SST		HBLSD8
	SSE		HBLSD8
	SSS		HBLSD8
	SSD		HBLSD8

⚠ Screws for black anodized brackets are HCBMTB (Trivalent Chromate Black) on P751.
⚠ Included Screw is not RoHS compliant when -SET, -SEU or -SEP other than black anodized brackets is specified.

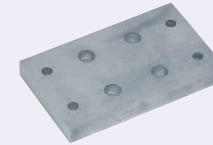
Plate Brackets / Block Brackets

For 8 Series (Slot Width 10mm) Aluminum Extrusions

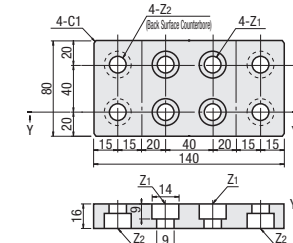


■ Features: Direct screw-on brackets to use on tapped extrusions.

Plate Brackets

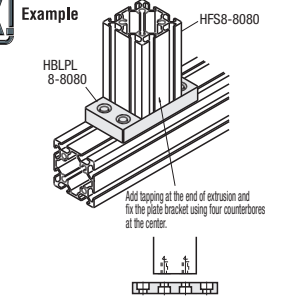


HBLPL8



Material: SS400
Surface Treatment: Electroless Nickel Plating

* Screws are not included.



Part Number	Extrusion	Z1 Applicable Screw	Z2	Mass (g)	Unit Price (1-99 pc(s))	Volume Discount Rate (10-50)
HBLPL8	8080	M8	M8	1240		

Ordering Example **Part Number** - **Extrusion**
HBLPL8 - **8080**



Alterations **Part Number** - **Extrusion** - **(DC)**
HBLPL8 - **8080** - **DC20**

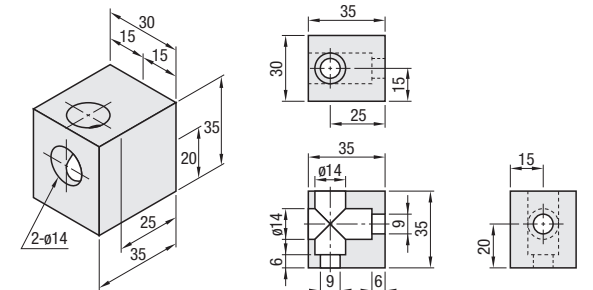
Alteration	Code	Spec.
Through Hole	DC	Adds a through hole. DC=Hole Dia. 1 mm Increment ⌀10≤DC≤20 Ordering Code DC12

■ Features: The brackets do not protrude from extrusion widths when used to cross connect extrusions. Space-saving design compared to Tabbed Reversal Brackets.

Block Brackets



HBLBL8



Material: A6N01SS-T5
Surface Treatment: Anodize

Part Number	Mass (g)	Applicable Screws and Nuts Set	Allowable Load (N)	Unit Price (1-99 pc(s))	Volume Discount Rate (100-200)
HBLBL8	79	CBM8-15	2	1666	

Ordering Example **Part Number**
HBLBL8



Alterations **Part Number** - (SET, SST, SEU, SSU, SEP, SSP)
HBLBL8 - SET

Alterations	Code	Spec.	Applicable Bracket
Applicable Screws and Nuts Set	SET	Applicable screws and nuts for fixing the brackets on extrusions come in a set. (Adds to the bracket price.) CODE Screw Nut SET CBM8-15 HNTT8-8 SST SCB8-15 HNTTSN8-8 SEU CBM8-15 HNTU8-8 SSU SCB8-15 SHNTU8-8 SEP CBM8-15 HNTTP8-8 SSP SCB8-15 SHNTP8-8	HBLBL8
	SEU		HBLBL8
	SSU		HBLBL8
	SEP		HBLBL8
	SSP		HBLBL8
	SST		HBLBL8
	SSE		HBLBL8
	SSS		HBLBL8
	SSD		HBLBL8

⚠ Included Screw is not RoHS compliant when -SET, -SEU or -SEP are specified.

