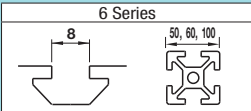


Note that, for some of the types shown here, order might be unable to be received by the MISUMI Malaysia, and/or Indonesia offices.

Extruded Brackets - For 2 Slots

For 6 Series (Slot Width 8mm) Aluminum Extrusions



■Features: Extruded Brackets to connect 2-slot extrusions (HFS6-6060, etc.).

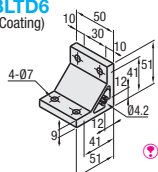
Thick Brackets



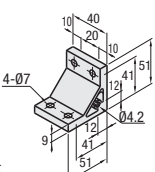
NBLTD6
HBLTD6
HBLTDB6
(Black Anodize)
CHBLTD6
(Clear Coating)

For 50 Sq.
HBLTD6-50

Type	Material	Surface Treatment
NBLTD6	A6063S-T5	Anodize
HBLTD6(-50)		Black Anodize
HBLTDB6		Clear Coating Anodize
CHBLTD6	A6N01SS-T5	+ Clear Paint



Both sides and screw holes of NBLTD6 is not anodized.



Part Number	Mass (g)	Applicable Screw, T Nut				Allowable Load (N)	Unit Price 1-99 pc(s)	Volume Discount Rate 100-200
		Screw	Quantity	T Nut	Quantity			
NBLTD6	111	CBM6-15	4	HNTT6- 6	4	1960		
HBLTD6								
HBLTD6* (Black Anodize)								
CHBLTD6 (Clear Coating)								
HBLTD6-50	88							

* For repairing black anodizing, refer to P846.

■Features: Numbers of screws are the same as HBLTD6. Extrusions can be connected more securely.

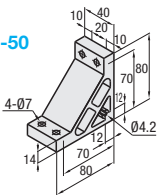
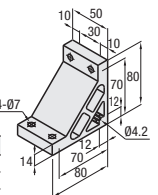
Ultra Thick Brackets



HBLUD6
HBLUDB6
(Black Anodize)

For 50 Sq.
HBLUD6-50

Type	Material	Surface Treatment
HBLUD6	A6N01SS-T5	Anodize
HBLUDB6		Black Anodize
HBLUD6-50		Anodize



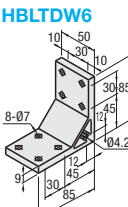
Part Number	Mass (g)	Applicable Screw, T Nut				Allowable Load (N)	Unit Price 1-99 pc(s)	Volume Discount Rate 100-200
		Screw	Quantity	T Nut	Quantity			
HBLUD6	256	CBM6-20	4	HNTT6- 6	4	1960		
HBLUDB6* (Black Anodize)								
HBLUD6-50	211	CBM6-20						

* For repairing black anodizing, refer to P846.

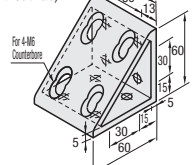
■Features: Brackets for 2-slot extrusions with 4 mounting holes on one side can connect extrusions more securely.

Thick Brackets

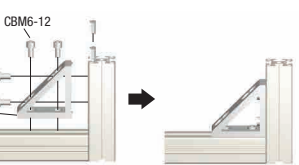
Triangle Brackets



HBLDDW6
(Without Tab)



Example



Material: A6N01SS-T5 Surface Treatment: Anodize

Part Number	Mass (g)	Applicable Screw, T Nut				Allowable Load (N)	Unit Price 1-99 pc(s).	Volume Discount Rate 100-200
		Screw	Quantity	T Nut	Quantity			
HBLTDW6	192	CBM6-15	8	HNTT6- 6	8	2940		
HBLDDW6	190	CBM6-12	8		8	2940		

Ordering Example
Part Number
HBLTD6

Alterations
Part Number
HBLTD6 - (C, SET, SST, SEU, SSU, SEP, SSP, SEC)

Alterations	Code	Spec.	Applicable Bracket
Mounting Hole Alteration for Cover	C	Adds taps on a bracket for cover mounting. (M5 on Both Sides) (Mounting Screw HCBM on P754)	NBLTD6
			HBLTD6
			CHBLTD6
			HBLTD6-50
			HBLUD6
			HBLUD6-50
			HBLTDW6

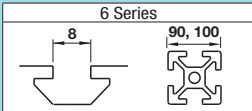
Alterations	Code	Spec.	Applicable Bracket
Applicable Screws and Nuts Set	SET SST (Stainless Steel)	Applicable screws and nuts for fixing the brackets on extrusions come in a set. (Adds to the bracket price.) (Ex.) When HBLTD6 is specified: Code Screw Nut SET CBM6-15 HNTT6-6 SST SCB6-15 HNTTSN6-6 SEU CBM6-15 HNTU6-6 SSU SCB6-15 SHNTU6-6 SEP CBM6-15 HNTTP6-6 SSP SCB6-15 SHNTTP6-6 SEC HCBST6-20 HNTT6-6	NBLTD6
	SEU (Pre-Assembly Insertion Spring Nuts)		HBLTD6
	SSU (Pre-Assembly Insertion Spring Nuts)		HBLTDB6
	SEP (Post-Assembly Insertion Spring Nuts)		CHBLTD6
	SSP (Post-Assembly Insertion Spring Nuts)		HBLTD6-50
	SEC (Screws with Captured Washer and Nuts)		HBLUD6
			HBLUDB6
			HBLUD6-50
			HBLTDW6
			HBLDDW6

⚠ Screws for black anodized brackets are HCBMTB (Trivalent Chromate Black) on P751.

⚠ Included Screw is not RoHS compliant when -SET, -SEU or -SEP other than black anodized brackets is specified.

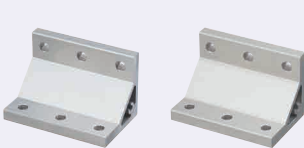
Extruded Brackets - For 3 or More Slots

For 6 Series (Slot Width 8mm) Aluminum Extrusions

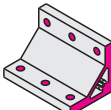
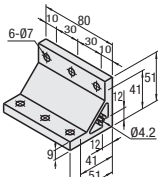


■Features: Extruded Brackets to connect Extrusions with 3 slots (HFS6-3090, etc.) with one bracket.

Thick Brackets



NBLTT6
HBLTT6



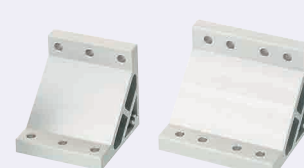
Both sides and screw holes of NBLTT6 is not anodized.

Type	Material	Surface Treatment
NBLTT6	A6063S-T5	Anodize
HBLTT6	A6N01SS-T5	

Part Number	Mass (g)	Applicable Screw, T Nut				Allowable Load (N)	Unit Price	Volume Discount Rate
Type		Screw	Quantity	T Nut	Quantity		1-99 pc(s)	100-200
NBLTT6	180	CBM6-15	6	HNTT6-6	6	2744		
HBLTT6								

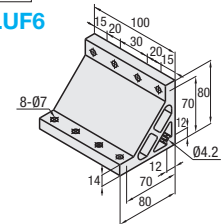
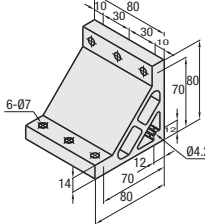
■Features: Brackets to connect Extrusions with 3 slots and 4 slots (HFS6-3090, 50100 etc.) with one bracket.

Ultra Thick Brackets



HBLUT6

For 100 Sq.
HBLUF6



Material: A6N01SS-T5
Surface Treatment: Anodize

Part Number	Mass (g)	Applicable Screw, T Nut			Allowable Load (N)	Unit Price	Volume Discount Rate
Type		Screw	Quantity	T Nut	Quantity	1-99 pc(s)	100-200
HBLUT6	409	CBM6-20	6	HNTT6-6	6	2744	
HBLUF6	512		8		8	2940	

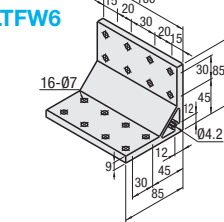
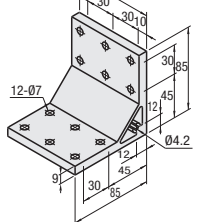
■Features: Brackets for 3-slot / 4-slot extrusions with 6 / 8 mounting holes on one side can connect extrusions more securely.

Thick Brackets



HBLTTW6

For 100 Sq.
HBLTFW6



Material: A6N01SS-T5
Surface Treatment: Anodize

Part Number	Mass (g)	Applicable Screw, T Nut			Allowable Load (N)	Unit Price	Volume Discount Rate
Type		Screw	Quantity	T Nut	Quantity	1-99 pc(s)	100-200
HBLTTW6	308	CBM6-15	12	HNTT6-6	12	4116	
HBLTFW6	384		16		16	4410	

Ordering Example
Part Number
HBLTT6

Alterations
Part Number
HBLTT6 - (C, SET, SST, SEU, SSU, SEP, SSP, SEC)

Alterations	Code	Spec.	Applicable Bracket
Mounting Hole Alteration for Cover	C	Adds taps on a bracket for cover mounting. (M5 on Both Sides, Depth 15mm) (Mounting Screw HCBM on P754)	HBLTT6
			HBLUF6
			HBLTTW6
			HBLTFW6

Alterations	Code	Spec.	Applicable Bracket
Applicable Screws and Nuts Set	SET SST (Stainless Steel)	Applicable screws and nuts for fixing the brackets on extrusions come in a set. (Adds to the bracket price.) (Ex.) When HBLTT6 is specified: Code Screw Nut SET CBM6-15 HNTT6-6 SST SCB6-15 HNTTSN6-6 SEU CBM6-15 HNTU6-6 SSU SCB6-15 SHNTU6-6 SEP CBM6-15 HNTTP6-6 SSP SCB6-15 SHNTTP6-6 SEC HCBST6-20 HNTT6-6	NBLTT6
	SEU (Pre-Assembly Insertion Spring Nuts)		HBLTT6
	SSU (Pre-Assembly Insertion Spring Nuts)		HBLUT6
	SEP (Post-Assembly Insertion Spring Nuts)		HBLUF6
	SSP (Post-Assembly Insertion Spring Nuts)		HBLTTW6
	SEC (Screws with Captured Washer and Nuts)		HBLTFW6

⚠ Included Screw is not RoHS compliant when -SET, -SEU or -SEP are specified.