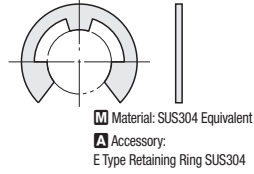
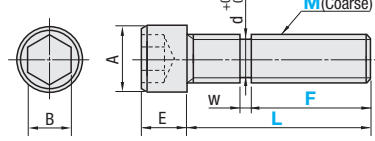


Hex Socket Head Cap Screws with Retaining Ring Groove / Stepped Screws

Low Head Selectable

Retaining Ring Groove Length Configurable Hex Socket Head Cap Screws

ERSCB



M Material: SUS304 Equivalent
A Accessory:
E Type Retaining Ring SUS304

RoHS10

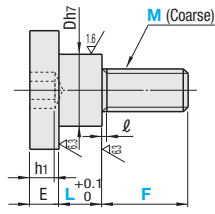
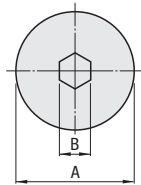
Part Number Type	M (Coarse)	1mm Increment		L-F Machining Conditions	A	E	B	d	W	Applicable E Type Retaining Ring (Nominal Dia.) (For details, see P265)	Unit Price
		F	L								
ERSCB	3	2~12	10~20	L-F≥8	5.5	3	2.5	2	0.5	2	
	4	3~13	10~20	L-F≥7	7	4	3	3	0.7	3	
	5	3~18	10~25	L-F≥7	8.5	5	4	4	0.7	4	
	6	3~23	10~30	L-F≥7	10	6	5	4	0.7	4	
	8	4~29	10~35	L-F≥6	13	8	6	6	0.9	6	

Ordering Example Part Number - F - L
ERSCB6 - 5 - 25

Stepped Screws



RoHS10



Type	M Material	S Surface Treatment
DBB	S45C	Black Oxide
DBS	SUS303	-

Part Number Type	M (Coarse)	L	F	E	Dh7	A	B	l	h1	DBB			DBS								
										Unit Price	Volume	Discount Rate	Unit Price	Volume	Discount Rate						
										1 - 4 pc(s).	5 - 19 pcs.	20 - 49 pcs.	50 - 100 pcs.	1 - 4 pc(s).	5 - 19 pcs.	20 - 49 pcs.	50 - 100 pcs.				
DBB	3	3	3 4 5 6	2	5	8	2	1	2												
		4	3 4 5 6																		
		5	3 4 5 6																		
		6	3 4 5 6																		
		7	4 5 6																		
	4	3	4 5 6 8							2.8	6	10	2.5	1.2	2.5						
		4	4 5 6 8																		
		5	4 5 6 8																		
		6	4 5 6 8																		
		7	4 5 6 8																		
5	3	5 8 10	3.5	8	12	3	1.4	3													
	4	5 8 10																			
	5	5 8 10																			
	6	5 8 10																			
	7	5 8 10																			
6	3	8 10 12							4	10	16	4	1.5	3.5							
	4	8 10 12																			
	5	8 10 12																			
	6	8 10 12																			
	7	8 10 12																			

Ordering Example Part Number - L - F
DBS6 - 3 - 10

Stepped Screws

Extra Low Head, Low Head, Button Head Cap, Phillips



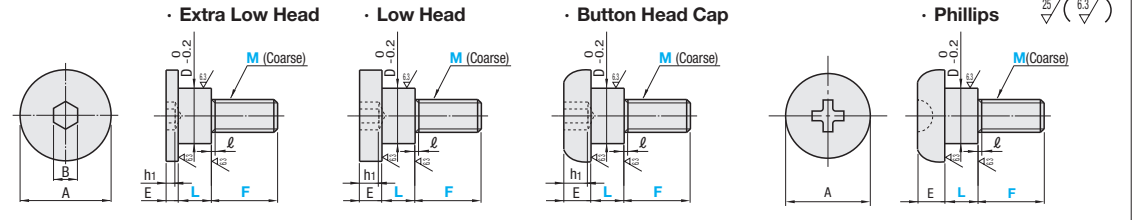
RoHS10

Extra Low Head	Low Head	Button Head Cap Screws	Phillips	M Material	S Surface Treatment
DBGB	DBTB	DBBB	DBJB	S45C	Black Oxide
DBGM	DBTM	DBBM	DBJM	S45C	Electroless Nickel Plating
DBGS	DBTS	DBBS	DBJS	SUS303	-

Reference Tensile Breaking Load (N)

	Extra Low Head	Low Head	Button Head Cap	Phillips
M3			1950	
M5			4630	

* The above data are for reference, not guaranteed.



Extra Low Head

Part Number Type	M (Coarse)	1mm Increment		E	D	A	B	l	h1	Unit Price		
		L	F							DBGB	DBGM	DBGS
DBGB	3	5~20	1.5	1.5	5	8	1.5	1	1.5			
										3~6		
										4~8		
										5~10		
										6~12		
										8~12		
DBGM	5	3~20	1.5	1.5	6	10	2.5	1.2	2			
										8~12		
										10~16		
										12~18		
DBGS	10	3~20	1.5	1.5	15	20	5	4	4			
										10~15		

Low Head

Part Number Type	M (Coarse)	1mm Increment		E	D	A	B	l	h1	Unit Price			
		L	F							DBTB	DBTM	DBTS	
DBTB	3	3~20	1.5	1.5	2	5	8	2	1	2			
											3~6		
											4~8		
											5~10		
											6~12		
											8~12		
DBTM	5	3~20	1.5	1.5	2.8	6	10	2.5	1.2	2.5			
											8~12		
											10~16		
											12~18		
DBTS	10	3~20	1.5	1.5	4	10	16	4	3.5	4			
											10~15		

Button Head Cap Screws

Part Number Type	M (Coarse)	1mm Increment		E	D	A	B	l	h1	Unit Price			
		L	F							DBBB	DBBM	DBBS	
DBBB	3	5~20	1.5	1.5	2.8	5	8	2	1	2			
											3~6		
											4~8		
											5~10		
											6~12		
											8~12		
DBBM	5	3~20	1.5	1.5	4.7	8	12	3	1.4	3			
											6~12		
											8~12		
											10~15		
DBBS	10	3~20	1.5	1.5	6.2	12	18	5	1.5	4			
											10~15		

Phillips

Part Number Type	M (Coarse)	1mm Increment		E	D	A	l	Unit Price				
		L	F					DBJB	DBJM	DBJS		
DBJB	3	1~20	1.5	1.5	2.8	5	8	1	1			
										3~6		
										4~8		
										5~10		
										6~12		
										8~12		
DBJM	5	1~20	1.5	1.5	3.5	6	10	1.2	1.4			
										8~12		
										10~15		
										6~12		
DBJS	10	1~20	1.5	1.5	6.9	15	20	6	4.5			
										10~15		

Ordering Example Part Number - L - F
DBTS6 - 3 - 10

Alterations Part Number - L - F - (LTC·PC)
DBJM6 - 3.4 - 10 - LTC

Alterations	Code	Spec.																												
	LTC	L Dimension Increment LTC=0.1mm Increment																												
	PC	Adds a relief on M. <table border="1"> <thead> <tr> <th>D</th> <th>MxPitch</th> <th>g</th> <th>f</th> </tr> </thead> <tbody> <tr> <td>5</td> <td>M3 x 0.5</td> <td>1.2</td> <td>2.3</td> </tr> <tr> <td>6</td> <td>M4 x 0.7</td> <td>1.2</td> <td>3.2</td> </tr> <tr> <td>8</td> <td>M5 x 0.8</td> <td>1.4</td> <td>4.0</td> </tr> <tr> <td>10</td> <td>M6 x 1.0</td> <td>1.7</td> <td>4.8</td> </tr> <tr> <td>12</td> <td>M8 x 1.25</td> <td>1.7</td> <td>6.5</td> </tr> <tr> <td>15</td> <td>M10 x 1.5</td> <td>2</td> <td>8.2</td> </tr> </tbody> </table>	D	MxPitch	g	f	5	M3 x 0.5	1.2	2.3	6	M4 x 0.7	1.2	3.2	8	M5 x 0.8	1.4	4.0	10	M6 x 1.0	1.7	4.8	12	M8 x 1.25	1.7	6.5	15	M10 x 1.5	2	8.2
D	MxPitch	g	f																											
5	M3 x 0.5	1.2	2.3																											
6	M4 x 0.7	1.2	3.2																											
8	M5 x 0.8	1.4	4.0																											
10	M6 x 1.0	1.7	4.8																											
12	M8 x 1.25	1.7	6.5																											
15	M10 x 1.5	2	8.2																											