

Bushings for Inspection Components

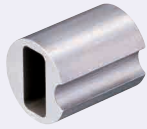
Square

Bushings for Inspection Components

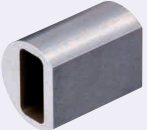
Threaded Bushings / For Plastic Panels

For compatible Pins, see P.1826 (Standard Type).

Straight (Dowel Pin)



Straight (D Cut)

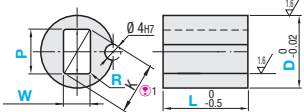


Shouldered (Dowel Pin)

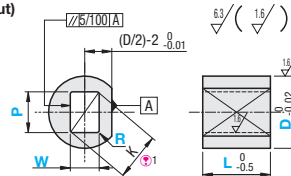


Material	Hardness	Type						P, W	H7
		Straight			Shouldered				
		Dowel Pin		D Cut	Dowel Pin		D Cut		
SKS93 Equivalent	50-60HRC	KJBSR	KJBHSR	KJBSRD	KJBHSRD	KJBSTR	KJBHSTR	3.00-6.00	+0.012
SUS304	-	KJBSRS	KJBHSRS	KJBSRDS	KJBHSRDS	-	-	6.01-10.00	+0.015
								10.01-18.00	+0.018
								18.01-22.00	+0.021

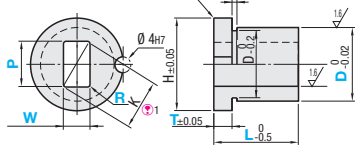
① Straight (Dowel Pin)



① Straight (D Cut)



② Shouldered (Dowel Pin)



$$① K = \sqrt{(P-2R)^2 + (W-2R)^2} + 2R$$

Part Number	Type	D	P 0.01mm Increment	W 0.01mm Increment	R 0.01mm Increment	L 1mm Increment	Shouldered Type only											
							T Selection	H										
							Straight		Shouldered									
KJBSR	KJBHSR	KJBSRD	KJBHSRD	KJBSTR	KJBHSTR	8	4	4.00-6.00										
						10	4	4.00-8.00										
						12	4	4.00-10.00										
						16	6	6.00-14.00										
						20	10	10.00-18.00										
						25	14	14.00-22.00										

② For Straight Type, there must be a 1mm or greater wall thickness between Dowel Hole and Square ((D-W)/2) - 2 ≥ 1).
 ③ There must be a 1mm or greater wall thickness between O.D. and square hole (For D=25, 1.5mm or more). (K ≤ Pmax) ④ D=8 is applicable to Shouldered Type only.

Ordering Example: Part Number - P - W - R - L - T

KJB STR 12 - P8.00 - W4.00 - R0.3 - L15 - T2

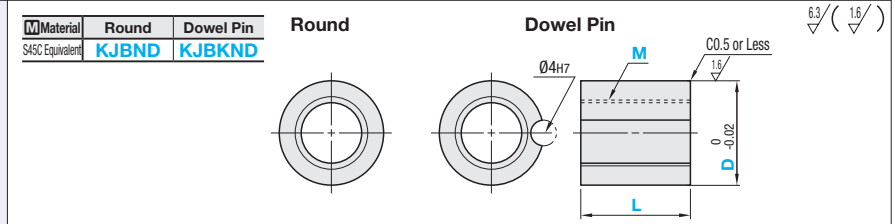
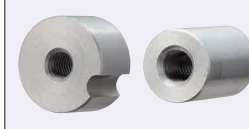
D	① Straight Type Unit Price						② Shouldered Unit Price											
	Dowel Pin			D Cut			Dowel Pin											
	P	W	R	P	W	R	P	W	R	L								
8																		
10																		
12																		
16																		
20																		
25																		

Alterations: Part Number - P - W - R - L - T - (FC, NC-etc.)

KJBHSR20 - P12.00 - W10.00 - R0.3 - L20 - NC

Alterations	Code	Spec.	Alterations	Code	Spec.
Groove (for Adhesive Reservoir)	FC	Adds an adhesive reservoir groove. ① D ≥ P+3: Applicable only when a wall of 1.5mm or thicker is remaining. ② Applicable when L ≥ 8 for Straight Type, L ≥ 15 for Shouldered Type.	Shoulder Thickness Tolerance	TKC	Changes shoulder thickness tolerance to ±0.01. ① Applicable to Shouldered Type only
Groove (for Retaining)	NC	Adds groove for retaining. ① D ≥ P+3: Applicable only when a wall of 1.5mm or thicker is remaining. ② Applicable when L ≥ 8 for Straight Type, L ≥ 15 for Shouldered Type.	L Dimension Tolerance	LKC	Changes L -0.05 dimension tolerance. ① Applicable only when L ≤ 19

Threaded Bushings



Part Number	Type	D	M Selection				L 1mm Increment	Unit Price	
			4	5	6	8		KJBND	KJBKND
KJBND	KJBKND	10	4	5	6	8	6-25 (L ≤ Mx3)		
		12	4	5	6	8			
		16	5	6	8	10 S10			
		20	5	6	8	10 S10			

For KJBKND, M size marked with * is not available. S10 is M10 fine thread (pitch 1.25).

Ordering Example: Part Number - M - L
KJBND16 - M6 - L15

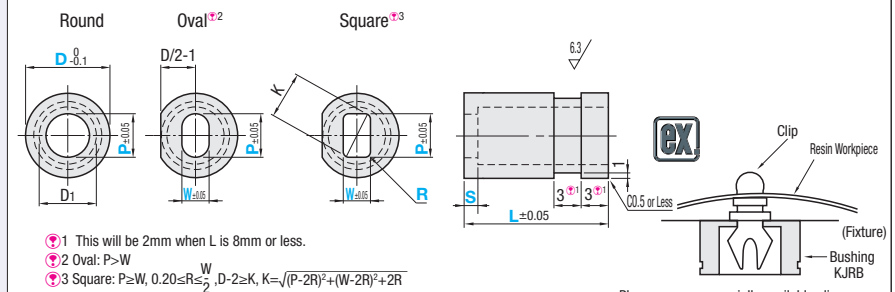
Alterations: Part Number - M - L - (FC, NC-etc.)
KJBND16 - M6 - L15 - FC

Alterations	Code	Spec.	Alterations	Code	Spec.
Groove (for Adhesive Reservoir)	FC	Adds an adhesive reservoir groove.	Additional Surface Treatment (Black Oxide)	STC	Adds black oxide surface treatment.
Groove (for Retaining)	NC	Adds groove for retaining.	Flats Machining	HT	Adds a flat on bushing. ① Applicable to Round Type only.

For Plastic Panels



Material	Hardness	Wall thickness	Type		
			Round	Oval	Square
S45C	17-23HRC	Standard	KJRB	KJRBC	KJRBR
Equivalent		Thin Wall	KJRUB	KJRUBC	KJRUBR
SUS304	-	Standard	KJRBS	-	KJRBSR



① This will be 2mm when L is 8mm or less.
 ② Oval: P > W
 ③ Square: P ≥ W, 0.20 ≤ R ≤ W/2, D - 2 ≥ K, K = √((P-2R)² + (W-2R)²) + 2R

Part Number	Type	D	P 0.05mm Increment	L 1mm Increment	W 0.05mm Increment	R 0.1mm Increment	S 0.05mm Increment	Unit Price						
								Standard		Thin Wall				
								KJRB	KJRBC	KJRBS	KJRBR	KJRUB	KJRUBC	KJRUBR
KJRB	KJRBC	KJRBR	16	3.00-8.00	6-25	0.2 ≤ R ≤ W/2	For Oval Type P > W (W ≥ 3.00) For Square Type P = W (W ≥ 3.00)	For S45C Equivalent Type 0.5-5.00 For SUS304 1.00-5.00	10	12				
			20	4.00-12.00					14	16				
			25	4.00-17.00					19	21				
			30	4.00-22.00					26	-				

④ D=30 applicable only to Standard Type. (Since the Standard Type is the thinnest.)

Ordering Example: Part Number - P - L - W - R - S
KJRUB20 - P6.0 - L15 - W6.5 - R0.8 - S2.00

Alterations: Part Number - P - L - W - R - S - (STC, HT)
KJRUB20 - P6.0 - L6 - W6 - R0.5 - S1.0 - STC

Alterations	Code	Spec.
Additional Surface Treatment (Black Oxide)	STC	Adds black oxide surface treatment. ① Applicable to Material S45C only.
Flats Machining	HT	Adds a flat on bushing. ① Applicable to Round Type only.