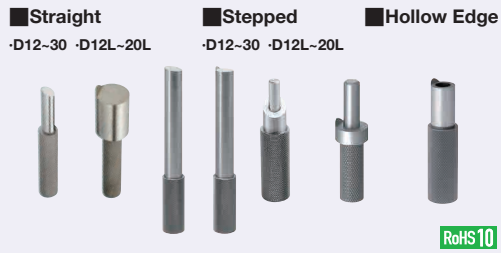


# Marking Pins

## Straight, Stepped, Hollow Edge

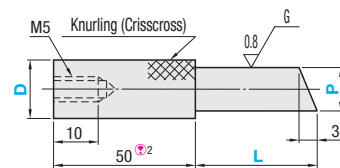
Features: Suitable when confirming dimensions by scribing on work pieces. For applicable bushings (② Stepped Type) see P1841, P1845.



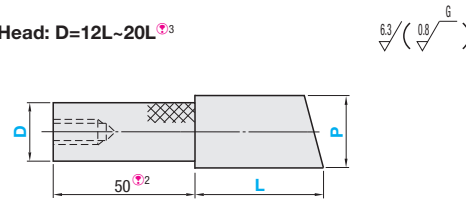
Config.	Material <sup>①</sup>	Hardness	① Straight		② Stepped		③ Hollow Edge	
			Type	Type	Type	Type	Type	Type
Standard	SKS3 Equivalent	58HRC~	P <sub>0.02</sub>	P <sub>g6</sub>	S <sub>0.02</sub>	S <sub>g6</sub>		
Sharp Pointed Tip	SKS3 Equivalent	58HRC~	KJPKH	KJPGKH	KJPKS	KJPGKS	KJPGKSC	

① When L dimension is 51 or more, the material for the handle part is S45C.

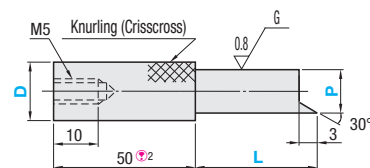
### ① Straight (Standard) Small Head: D=12-30



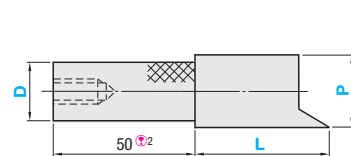
### Large Head: D=12L-20L<sup>③</sup>



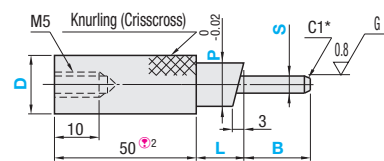
### ① Straight (Sharp Pointed Tip) Small Head: D=12-30



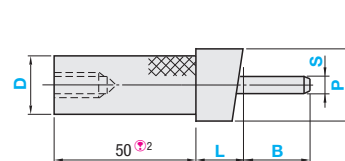
### Large Head: D=12L-20L<sup>③</sup>



### ② Stepped (Standard) Small Head: D=12-30

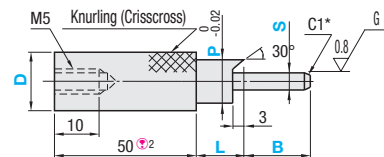


### Large Head: D=12L-20L<sup>③</sup>

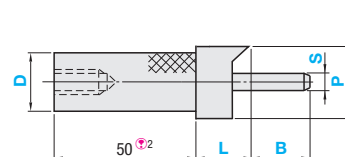


\* When S=2, C is 0.5.

### ② Stepped (Sharp Pointed Tip) Small Head: D=12-30

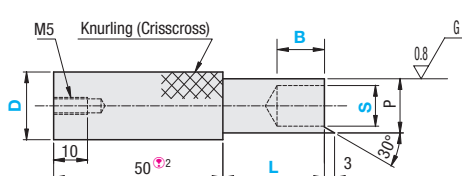


### Large Head: D=12L-20L<sup>③</sup>

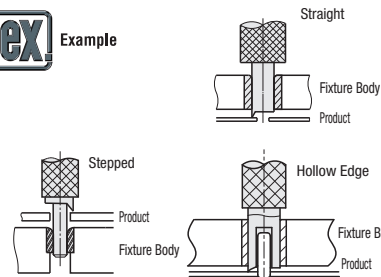


\* When S=2, C is 0.5.

### ③ Hollow Edge



① Handles and pins may be joined with an adhesive. Note that Heat or strong force may cause separation.



② For shorter handle length, please refer to the alteration ZC on the next page.  
③ Dimensions not specified are the same as Small Head Type.

### ① Straight

Part Number		D	P 0.01mm Increment	L 1mm Increment	Unit Price			
TYPE	P <sub>0.02</sub>				Standard		Sharp Pointed Tip	
(Standard) KJPKH	(Standard) KJPGKH	12	6.00-10.00	10-100	KJPKH		KJPGKH	
		16	10.01-14.00		L10-50	L51-100	L10-50	L51-100
		20	14.01-18.00					
		25	18.01-20.00					
		30	20.01-25.00					
(Sharp Pointed Tip) KJPKHE	(Sharp Pointed Tip) KJPGKHE	12L	12.00-20.00	10-50	KJPKHE		KJPGKHE	
		16L	16.00-25.00		L10-50	L51-100	L10-50	L51-100
		20L	20.00-30.00					

### ② Stepped

Part Number		D	P 0.01mm Increment	S (P-4≥S) 0.1mm Increment	L 1mm Increment	B 1mm Increment	Unit Price			
TYPE	S <sub>0.02</sub>						Standard		Sharp Pointed Tip	
(Standard) KJPKS	(Standard) KJPGKS	12	6.00-10.00	2.0-6.0	5-20	10-20	KJPKS		KJPGKS	
		16	8.00-14.00	3.0-10.0						
		20	10.00-18.00	3.0-14.0						
		25	15.00-23.00	6.0-19.0						
		30	20.00-28.00	10.0-24.0						
(Sharp Pointed Tip) KJPKSE	(Sharp Pointed Tip) KJPGKSE	12L	12.00-20.00	3.0-16.0	10-40	10-40	KJPKSE		KJPGKSE	
		16L	16.00-25.00	6.0-21.0						
		20L	20.00-30.00	10.0-26.0						

### ③ Hollow Edge

Part Number	D	S 0.1mm Increment	L <sup>①</sup> 1mm Increment	B 1mm Increment	P <sup>②</sup>	Unit Price
KJPGKSC	12	2.0-4.0	5-40	3-15	10	
	16	3.0-6.0		3-30	12	
	20	6.0-10.0		5-30	16	
	25	8.0-14.0		5-35	20	
	30	12.0-19.0		5-35	25	



Ordering Example  
 Part Number (TYPE, D) - P - S - L - B  
 ① Straight Standard KJPKH20 - P16.00 - L100  
 ① Straight, Sharp Pointed Tip KJPKHE16 - P10.10 - L12  
 ② Stepped Standard, Large Head KJPKS16L - P20.20 - S6.8 - L10 - B10  
 ③ Hollow Edge, Sharp Pointed Tip KJPGKSC16 - S6.0 - L10 - B10

\*1 When L dimension of Hollow Edge Type is short, it may interfere with M5 screw pilot hole.  
 \*2 When Hollow Edge Type needs P dimension specified, use alteration PC.



Alterations  
 Part Number - P - S - L - B - (CH, KH, PKC...etc.)  
 KJPKH16 - P10.1 - L12 - CH  
 KJPGKSC20 - S8.0 - L25 - B20 - PC14  
 KJPKHE12 - P7.02 - L80 - B20 - ZC30  
 KJPKSE16L - P20.00 - S12.1 - L15 - B20 - PKC

Alterations	Code	Spec.															
Additional Surface Treatment (Black Oxide)	STC	Adds black oxide surface treatment.															
P Dimension	PC	Changes the P dimension. * Applicable to Hollow Edge Type only. * Specify the tap size so that 3mm or more wall thickness remains. (PC≥S+6) Ordering Code PC13 <table border="1"> <thead> <tr> <th>D</th> <th>PC</th> </tr> </thead> <tbody> <tr> <td>12</td> <td>8, 9</td> </tr> <tr> <td>16</td> <td>10, 11</td> </tr> <tr> <td>20</td> <td>12-15</td> </tr> <tr> <td>25</td> <td>16-19</td> </tr> <tr> <td>30</td> <td>20-24</td> </tr> </tbody> </table>	D	PC	12	8, 9	16	10, 11	20	12-15	25	16-19	30	20-24			
D	PC																
12	8, 9																
16	10, 11																
20	12-15																
25	16-19																
30	20-24																
Engraving of the Specified Characters	KF	Engraves alphabet or number. Ordering Code KF-MISUMI0034 Printable Character: alphabet, number, (period) * No symbols, such as a hyphen (-), other than those mentioned above may be used for engraving. * The pin's orientation to the pin to the engraved characters is arbitrary. * Engraved on the reverse side when combined with KH. <table border="1"> <thead> <tr> <th>Z (Handle)</th> <th colspan="2">Max. Characters</th> </tr> <tr> <th></th> <th>Small Head</th> <th>Large Head</th> </tr> </thead> <tbody> <tr> <td>30</td> <td>10</td> <td>5</td> </tr> <tr> <td>40</td> <td>12</td> <td>10</td> </tr> <tr> <td>50</td> <td></td> <td></td> </tr> </tbody> </table> * Up to 8 digits max. * When combining with other options, enter this last.	Z (Handle)	Max. Characters			Small Head	Large Head	30	10	5	40	12	10	50		
Z (Handle)	Max. Characters																
	Small Head	Large Head															
30	10	5															
40	12	10															
50																	
Engraving of P Dimension	KH	Machines flats on knurled head and engraves P dimension (with the character orientation arbitrary). * Engraved on the reverse side when combined with KF.															

Alterations	Code	Spec.
P Dimension Tolerance	PKC	Changes P dimension tolerance to g6. * Applicable to Stepped Type only.
Tip	SST	Makes acute-angled edge of Scribing Pin triangular to make it sharper. * Applicable to Acute-angled Type only.
Chain Alterations	CH	Loss-proof chain (length 600mm) is attached to gauge body. * For chains only, see P1862.
Handle Length	ZC	Changes handle length 50 to 30 or 40.

Cautions when making alterations to engraving (KF, KH)  
 \* If the pin and the knurled part are joined with an adhesive, 10mm of the tip is not machined flat because the tip is thin.

