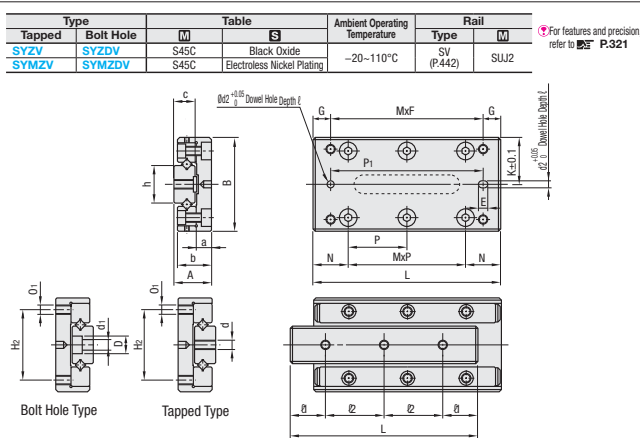
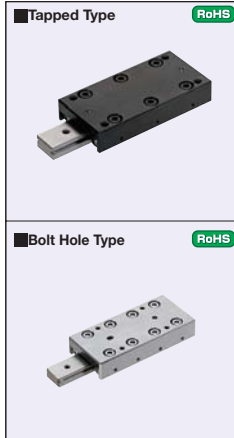




Precision Slide Tables -Height Tolerance ± 0.02/With Dowel Holes (Table Top)- -Tapped Type/Bolt Hole Type-

CAD Data Folder Name: Slide_Guides
* All prices are in SS and subjected to change without prior notice



Part Number		Main Dimension				Table Mounting Hole Dimension				Table Dimension				Table Dowel Hole Dimension			
Type	No.	Stroke (Reciprocating)	A	B	L	G	MxF	H ₂	O ₁	N	P	MxP	d ₂	Effective length (E)	E	P ₃	K
Tapped Type SYZV SYMZV	1025	12	9±0.02	20±0.1	25	3.5	1x18	14	M2.6	7.5	10	1x10	2.5	2.5	3.5	18	10
	1035	18					2x10					2x8					
	1045	25					1x20					3x10					
	1055	32	55	12.5	1x30	4x10	30	30									
	2050	40	65	2x20	5x10	40	40	60									
	2035	18	35	3.5	1x28	1x15	28	28									
	2050	30	50	1x43	2x15	43	43	30									
	2065	40	60	1x30	3x15	30	30	60									
	2080	50	80	17.5	1x45	4x15	45	45									
	2095	60	95	2x30	5x15	60	60	90									
Bolt Hole Type SYZDV SYMZDV	2110	70	12±0.02	30±0.1	80	17.5	1x50	22	M3	10	15	4x15	3	3	4	45	15
	2095	60					2x30					5x15					
	2125	80					110					32.5					
	3065	30	55	7.5	1x40	1x25	40	40									
	3080	45	80	1x65	2x25	65	65	50									
	3105	60	105	1x50	3x25	50	50	75									
	3130	75	130	27.5	1x75	4x25	75	75									
	3155	90	155	2x50	5x25	100	100	100									
	3180	105	180	52.5	1x75	6x25	75	75									

No.	Side Dimension				Rail Mounting Hole Dimension								
	a	b	c	h	SYZV - SYMZV				SYZDV - SYMZDV				
					d	ℓ ₁	ℓ ₂	No. of Holes	d ₁	D	ℓ ₁	ℓ ₂	No. of Holes
1025	3.5	7.5	5	6.6	M2.6	5	7.5	3	2.5	4.1	3.5	—	2
1035						5	—	2					
1045						4	6.5	4					
1055						5	9.5	4					
1065						6	12	4					
2035						7.5	20	2					
2050						7.5	—	2					
2065						11	4	4					
2080						5	15	4					
2095						7	20	4					
2110	4.5	10.5	7	12	M3	10	15	3.5	6	5	15	4	
2125						8	27.5	4					
3065						7.5	22.5	4					
3080						7.5	27.5	4					
3105						10	35	2					
3130						6	12.5	4					
3155						4	17.5	4					
3180						5	25	4					
						6	22.5	4					
						7	40	4					

Part Number	No.	Basic Load Rating		SYZV - SYMZV		SYZDV - SYMZDV		Unit Price	Unit Price
		C (Dynamic) N	Co (Static) N	Qty. 1-9 Sets	Qty. 10-19 Sets	Qty. 1-9 Sets	Qty. 10-19 Sets		
1025	340	312	263.86	250.66	269.59	255.99			
1035	572	624	291.06	276.39	281.73				
1045	676	780	339.99	322.93	345.72	328.39			
1055	776	936	387.32	367.86	392.92	373.19			
1065	871	1090	430.66	409.06	436.26	414.39			
2035	594	588	259.73	246.66	265.33	251.99			
2050	805	882	310.86	295.06	316.26	300.39			
2065	999	1180	355.19	337.32	360.79	342.66			
2080	1350	1760	400.52	380.39	406.26	385.86			
2095	1520	2060	437.72	415.72	443.46	421.19			
2110	1680	2350	493.19	468.52	498.92	473.85			
2125	1840	2650	541.32	514.25	546.92	519.45			
3055	1800	2120	239.86	223.99	241.46	229.33			
3080	2640	3530	323.73	307.46	329.33	312.79			
3105	3030	4240	410.12	389.59	415.72	394.92			
3130	3760	5650	496.65	471.72	502.25	477.05			
3155	4440	7060	585.05	555.72	590.65	561.05			
3180	5100	8470	671.58	637.98	677.18	643.52			

Order Example: SYMZV3055

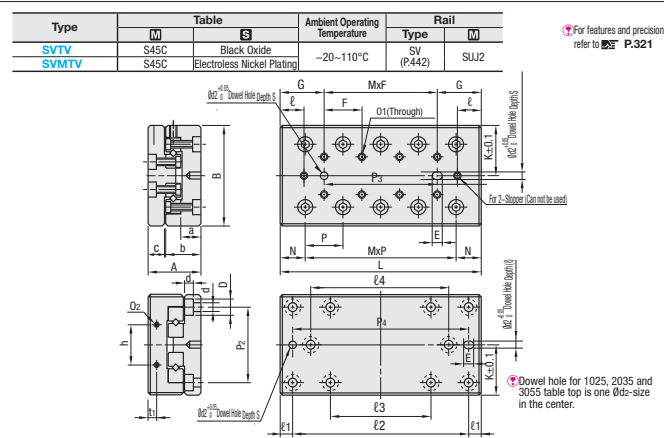
Days to Ship: 5 Days

* For orders larger than indicated values, please request for quotation.



Precision Slide Tables -Height Tolerance ± 0.02/With Dowel Holes (Table & Bed)-

CAD Data Folder Name: Slide_Guides
* All prices are in SS and subjected to change without prior notice



Part Number		Main Dimension				Table Mounting Hole Dimension				Table Dimension			
Type	No.	Stroke (Reciprocating)	A	B	L	G	MxF	P ₁	O ₁	N	P	MxP	ℓ
SVTV SVMTV	1025	12	17±0.02	30 ^{-0.2} _{-0.4}	25	12.5	—	10	M2	7.5	10	1x10	2.5
	1035	18					1x10					2x10	4.5
	1045	25					2x10					3x10	6
	1055	32	55	3x10	4x10	7.5	7.5						
	2050	40	65	4x10	5x10	8.5	8.5						
	2035	18	35	3.5	1x15	1x15	3	3					
	2050	30	50	1x15	2x15	4.5	4.5						
	2065	40	60	1x15	2x15	7	7						
	2080	50	80	17.5	3x15	4x15	15	15					
	2095	60	95	2x25	4x15	12	12						
2110	70	110	5x15	6x15	14.5	14.5							
2125	80	125	6x15	7x15	17	17							
3055	30	55	—	1x25	1x25	5.5	5.5						
3080	45	80	1x25	2x25	10.5	10.5							
3105	60	105	2x25	3x25	15.5	15.5							
3130	75	130	3x25	4x25	20.5	20.5							
3155	90	155	4x25	5x25	25.5	25.5							
3180	105	180	5x25	6x25	30.5	30.5							

No.	Side Dimension				Rail Mounting Hole Dimension								Dowel Hole Dimension																							
	a	b	c	h	d	ℓ ₁	ℓ ₂	No. of Holes	d ₁	D	ℓ ₁	ℓ ₂	No. of Holes	d ₂	E	P ₃	P ₄	K																		
1025	7	11	5.5	12	2.5	M2	22	2.5	4.5	3.5	3.5	2.5	4	3.5	4	3.5	15	15																		
1035																			18	—	—	—	—	—	—	—	—	—	—	—	—	—	—	—	—	
1045																			28	—	—	—	—	—	—	—	—	—	—	—	—	—	—	—	—	—
1055																			48	28	—	—	—	—	—	—	—	—	—	—	—	—	—	—	—	—
1065																			58	38	—	—	—	—	—	—	—	—	—	—	—	—	—	—	—	—
2035																			25	—	—	—	—	—	—	—	—	—	—	—	—	—	—	—	—	—
2050																			40	—	—	—	—	—	—	—	—	—	—	—	—	—	—	—	—	—
2065																			55	—	—	—	—	—	—	—	—	—	—	—	—	—	—	—	—	—
2080																			70	40	—	—	—	—	—	—	—	—	—	—	—	—	—	—	—	—
2095																			85	55	—	—	—	—	—	—	—	—	—	—	—	—	—	—	—	—
2110	100	70	—	—	—	—	—	—	—	—	—	—	—	—	—	—	—	—																		
2125	115	85	—	—	—	—	—	—	—	—	—	—	—	—	—	—	—	—																		
3055	35	—	—	—	—	—	—	—	—	—	—	—	—	—	—	—	—	—																		
3080	50	—	—	—	—	—	—	—	—	—	—	—	—	—	—	—	—	—																		
3105	65	—	—	—	—	—	—	—	—	—	—	—	—	—	—	—	—	—																		
3130	85	—	—	—	—	—	—	—	—	—	—	—	—	—	—	—	—	—																		
3155	110	—	—	—	—	—	—	—	—	—	—	—	—	—	—	—	—	—																		
3180	135	—	85	—	—	—	—	—	—	—	—	—	—	—	—	—	—	—																		
	160	—	110	—	—	—	—	—	—	—	—	—	—	—	—	—	—	—																		

Part Number	No.	Basic Load Rating		SVTV Unit Price		SVMTV Unit Price	
		C (Dynamic) N	Co (Static) N	Qty. 1-9 Sets	Qty. 10-19 Sets	Qty. 1-9 Sets	Qty. 10-19 Sets
1025	340	312	263.86	334.79	317.99	340.39	323.33
1035	572	624	291.06	371.59	352.92	377.19	358.26
1045	676	780	339.99	427.59	406.12	433.19	411.46
1055	776	936	387.32	487.45	463.06	493.05	468.39
1065	871	1090	430.66	547.19	519.72	552.85	524.32
2035	594	588	259.73	292.26	277.59	302.26	287.06
2050	805	882	310.86	350.26	332.66	362.39	344.26
2065	999	1180	355.19	400.26	380.12	414.12	393.32
2080	1350	1760	400.52	451.46	428.79	467.05	443.59
2095	1520	2060	437.72	477.45	453.46	483.05	458.79
2110	1680	2350	493.19	537.99	511.05	543.45	516.25
2125	1840	2650	541.32	590.39	560.79	595.99	566.12
3055	1800	2120	239.86	257.73	244.79	266.53	253.19
3080	2640	3530	323.73	354.52	336.79	366.79	348.39
3105	3030	4240	410.12	449.32	426.79	464.79	441.46
3130	3760	5650	496.65	526.65	500.25	532.12	505.45
3155	4440	7060	585.05	620.25	589.19	625.85	594.52
3180							