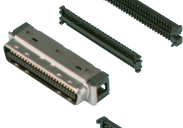


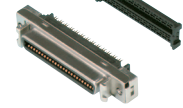
Information on Components Used

Connector / Hood

SHPT / SHPK / SHPF / SHPFJS / WSHPT / WSHPK / WSHF / BHHPT / ESHT / IHSK



Connector	
Manufacturer	Sumitomo 3M
Model Number	101**-***0EL
Rated Current	0.5A
Rated Voltage	150 VAC
Click Here for Details	OP.83



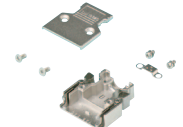
Panel Mount Type Connector	
Manufacturer	Sumitomo 3M
Model Number	102**-***0EL
Rated Current	0.5A
Rated Voltage	150 VAC
Click Here for Details	OP.84



Angle Hood	
Manufacturer	Sumitomo 3M
Model Number	103**-3540-0*0
More Information	Not in Catalog



EMI Countermeasure Plastic Hood	
Manufacturer	Sumitomo 3M
Model Number	103**-3210-000
More Information	OP.86



EMI Countermeasure Die-cast Hood	
Manufacturer	Sumitomo 3M
Model Number	103**-C200-00
More Information	OP.86

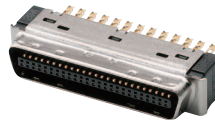


Plastic Hood (40-core and 68-core are unavailable) Jack Screw Fixing	
Manufacturer	Sumitomo 3M
Model Number	103**-52A0-008
More Information	OP.85

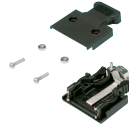


Plastic Hood (40-core and 68-core are unavailable) One-touch Lock Fixing	
Manufacturer	Sumitomo 3M
Model Number	103**-52F0-008
More Information	OP.85

BHHPT / BHHPTJS



Connector	
Manufacturer	Sumitomo 3M
Model Number	101**-3000PE
Rated Current	0.5A
Rated Voltage	150 VAC
More Information	OP.83



Plastic Hood	
Manufacturer	Sumitomo 3M
Model Number	103**-52F0-008
More Information	OP.85

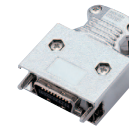
Plastic Hood (40-core and 68-core are unavailable) Jack Screw Fixing

Plastic Hood (40-core and 68-core are unavailable) Jack Screw Fixing	
Manufacturer	Sumitomo 3M
Model Number	103**-52A0-008
More Information	OP.85

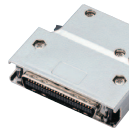
SHPM / SHPMJS



Connector	
Manufacturer	Sumitomo 3M
Model Number	10***-***0EL
Rated Current	0.5A
Rated Voltage	150 VAC
More Information	OP.83



Hood (Straight)	
Manufacturer	Misumi
Model Number	MDR-***S
More Information	OP.87



Hood (Angle)	
Manufacturer	Misumi
Model Number	MDR-***L
More Information	OP.87

GLIE



MDR Connector (Pin)	
Model Number	FMCIE**MA**
Rated Current	1A
Rated Voltage	500V
Manufacturer	Misumi
Remarks	Not currently available for sale in Japan

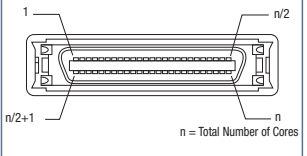
GLIE



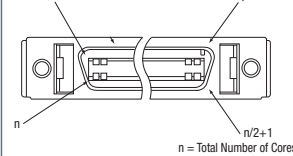
MDR Shell	
Model Number	MPL**NK**ALS
Specification	EMI Protection
Materials	Nickel-plated Steel
Manufacturer	Misumi
Remarks	Not currently available for sale in Japan

- Dsub Connector
- Included Cable
- MIL Socket Connector
- Included Cable
- FCN Connector
- Included Cable
- Connector Included Conversion/Branch Cable
- Centronics Connector
- Included Cable
- Cable with IEEE 1284 Half Pitch Connector
- MR Connector
- Included Cable
- PCR Half Pitch Connector
- Included Cable
- PCS Half Pitch Connector
- Included Cable
- HDR A / HDR Connector
- Included Cable
- DX31 Half Pitch Connector
- Included Cable
- 8840 Half Pitch Connector
- Included Cable
- Cable with Han Waterproof Connector

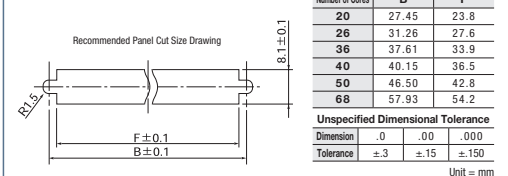
IEEE1284 Male Connector Contact Arrangement Diagram



IEEE1284 Female Connector Contact Arrangement Diagram



Panel Mount Connector Recommended Panel Cut Size



Crimp Terminal



Y Type Crimp Terminals	
Manufacturer	Daido Solderless Terminal Mfg. Co.
Model Number	F0.3-3 Equivalent
Size	3.2mm
Outer Width	5.2mm
More Information	OP.468



Round Type Crimp Terminals	
Manufacturer	Daido Solderless Terminal Mfg. Co.
Model Number	0.3-3 Equivalent
Size	3.2mm
Outer Width	5.2mm
More Information	OP.464



Y Type Crimp Terminals	
Manufacturer	Daido Solderless Terminal Mfg. Co.
Model Number	F0.08-3 Equivalent
Size	3.2mm
Outer Width	5.2mm
More Information	OP.468

The Y type crimp terminals are for M3 screw terminal block. The crimp terminal used is changed according to the thickness of the cable used.