



Quality - Cost - Time  
**INNOVATION**

## **Company Profile**

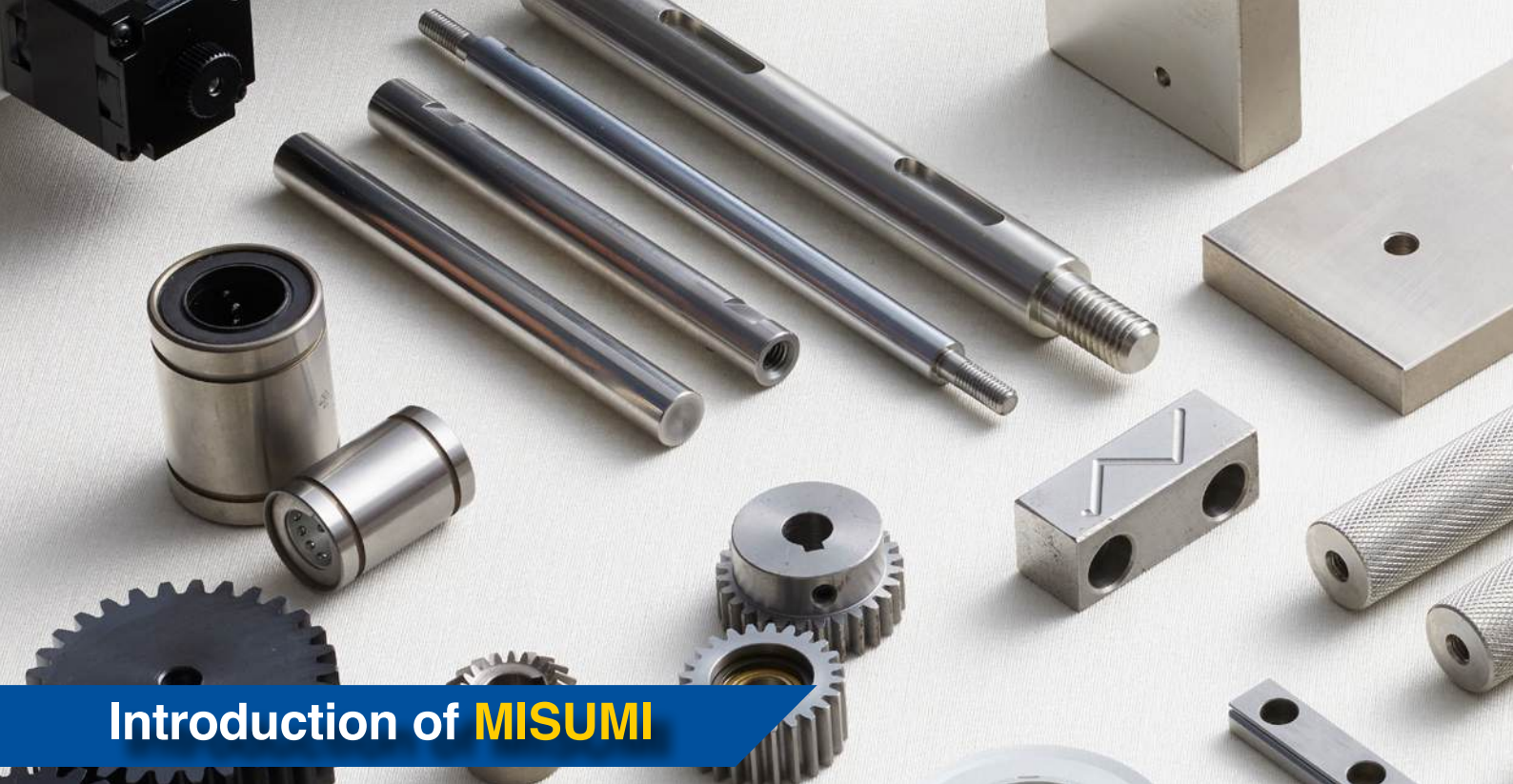
---

**Innovation in Industrial Supply Commerce for  
Variety of Industrial and Engineering Components**

**Southeast Asia and India Edition**

---

Singapore, Thailand, Vietnam  
Malaysia, Indonesia, India



## Introduction of MISUMI

Ever since the founding of the company in 1963 in Japan, MISUMI Group has been operating from behind the scenes in supporting the manufacturing industry, expanding our business throughout the global market. In Asia, we have established our subsidiaries in Singapore, Thailand, India, Malaysia, Indonesia, Vietnam, and etc.

**MISUMI** maintains 99.96% on-time success ratio for delivery of orders, earning customers' complete trust in knowing that any product ordered will be delivered on time. This achievement has led to MISUMI's robust market growth.

## MISUMI's Business Operations Comprise:

1. **"FA Business"** mainly handles standardized components for automated equipment used in factory automation and other applications;
2. **"Die Components Business"** mainly handles die and mold parts used to make automobiles and electronics devices;
3. **"VONA (Variation & One-stop by New Alliance) Business"** is a relatively new distribution business which sells third-party manufactured products alongside MISUMI brand products. Products sold through the VONA platform include components for production equipment, materials for production activities and maintenance, repair and operations (MRO).

**MISUMI** has been proactively supporting the manufacturing industry from behind the scenes, starting from catalog sales in Japan and throughout the world. With customers' conveniences as our top priority, our mission is to provide high quality (**Quality**), low cost (**Cost**) and reliably quick delivery times (**Time**). We will continuously innovate MISUMI model in response to the advancement of digital manufacturing and to support customer's total manufacturing processes.





# CONTENTS

<b>MISUMI Group's Business Outline</b>	<b>04</b>
MISUMI QCT Model	05
Manufacturing Business	06
Distribution Business	08
<b>Product Category Overview</b>	<b>09</b>
<b>5 Benefits of MISUMI</b>	<b>13</b>
<b>MISUMI Group's Subsidiaries</b>	
MISUMI South East Asia	14
MISUMI Thailand	15
MISUMI India	16
MISUMI Malaysia	17
MISUMI Indonesia	18
MISUMI Vietnam	19
<b>MISUMI Catalog Channel</b>	<b>20</b>
<b>e-catalog Guideline</b>	
How to Register	21
How to Search	21
Product Ordering Flow	22
Quotation & Ordering	23
<b>Global Network</b>	<b>24</b>



# MISUMI Group's Business Outline

MISUMI Group's business operations comprise: FA Business, which mainly handles standardized components used in factory automation and other applications; Die Components Business handles die and mold parts used to manufacture automobiles, electronics and electrical equipment. The VONA Business is a relatively new distribution business, selling third-party brand products alongside MISUMI brand products. Products sold under the VONA Business include components related to production facilities, production auxiliary materials and consumables such as MRO.

## Major Products Handled by MISUMI Group



		Product Category	31 Million Product Items			
Manufacturing Business	FA Business	FA Standardized mechanical components	 Shafts	 Timing Pulleys	 Linear Bushings	 Flat Belt Conveyors
			 Shaft Collars	 Locating Pins	 Gears	 Couplings
	Die Components Business	Positioning devices and measurement equipments (OST Business)	 Motorized Stage Units	 Actuators	 Optical Measurement Devices	 Optical Waveguide Alignment
		Standardized parts for press and plastic die and mold parts	 Punches	 Button Dies	 Ejector Pins	 Sprue Bushings
Distribution Business	VONA Business	Mechanical components	 Sensors and Switches	 Couplings	 Screws, Bolts and Nuts	 Casters
		Wiring, control and PC components	 Connectors	 Switches	 Cables	 Transformers
		Cutting tools and components for production machining	 End Mills	 Hexagonal Wrenches	 Milling Chips	 Calipers
		Packaging, logistics & storage materials and safety & protection, environmental, sanitary and office supplies	 Carts	 Work Gloves	 Parts Cleaner	 Laboratory Equipment & Supplies

\*FA : Factory Automation \* OST : Optical & Scientific Technology \* VONA : Variation & One-stop by New Alliance



# MISUMI QCT Model

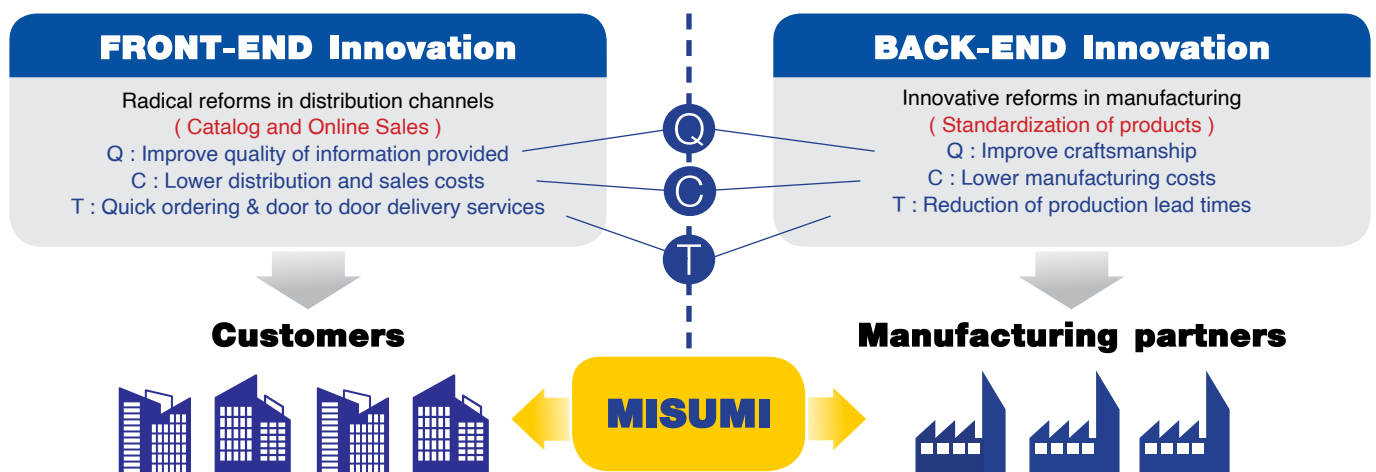
MISUMI Group engages in both manufacturing and distribution businesses. These are in turn supported by our business foundation and IT infrastructure. In the manufacturing business, we are standardizing products, expanding product domains, and strengthening our production infrastructure. Meanwhile, in the distribution business, we are increasing our product lineup and enhancing service offerings. Furthermore, we are working towards building a production materials platform by continuing to drive forth innovation within the business foundation, including IT, production, and distribution.

## Transforming our business structure toward production materials platform



MISUMI is leveraging the “MISUMI QCT Model”, which aims to deliver high quality (Q) at low cost (C) with reliable, quick delivery times (T); radically transforming both customer distribution channels through catalog and online sales and transforming manufacturing through product standardization. As ‘behind-the-scenes supporter’ of the global manufacturing industry, we assist customers within the industry by offering optimal services and delivery of a wide range of products used at manufacturing sites.

## MISUMI QCT Model

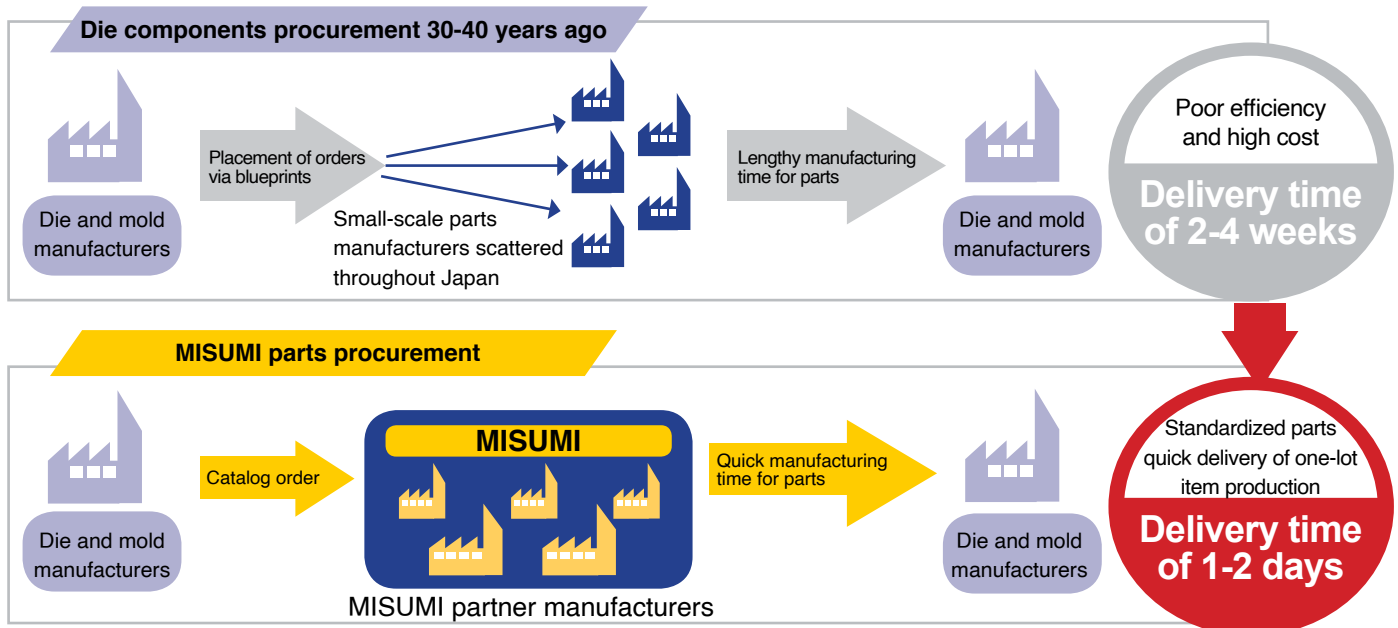




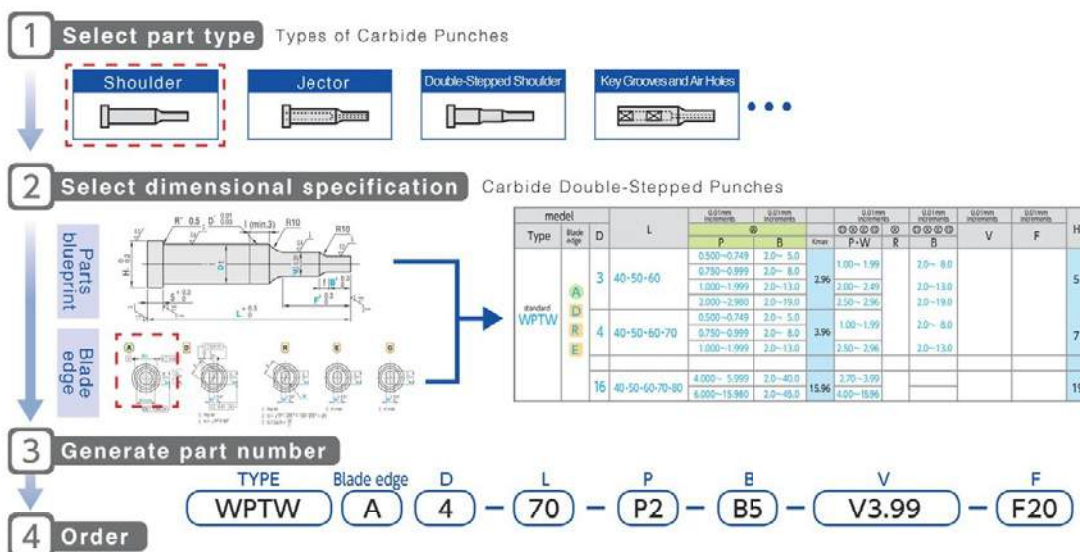
# Manufacturing Business

MISUMI Group's e-catalog, mobile application and paper catalogs are devised so that customers simply enter a part number and dimensions to place an order. Traditionally, the ordering process for parts were inefficient. When ordering FA equipment parts or Die components, customers had to draw up blueprints for each part or component, select from a wide array of parts manufacturers, and individually negotiate delivery times and prices. MISUMI has significantly alleviated inefficiencies in parts procurement by standardizing parts and selling these offerings through online catalog.

## ⚙ MISUMI's innovation for parts procurement

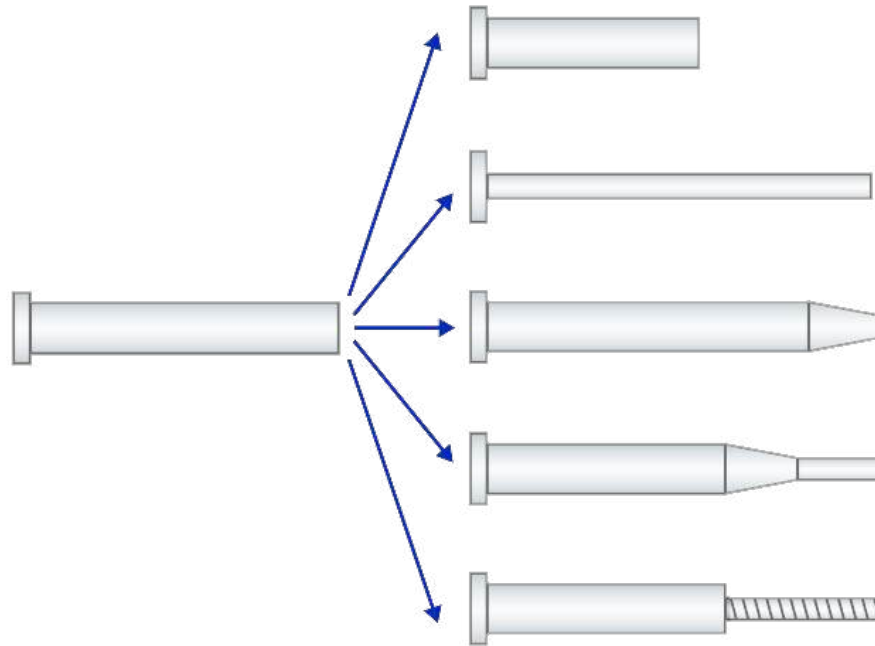


## ⚙ MISUMI's catalog order process



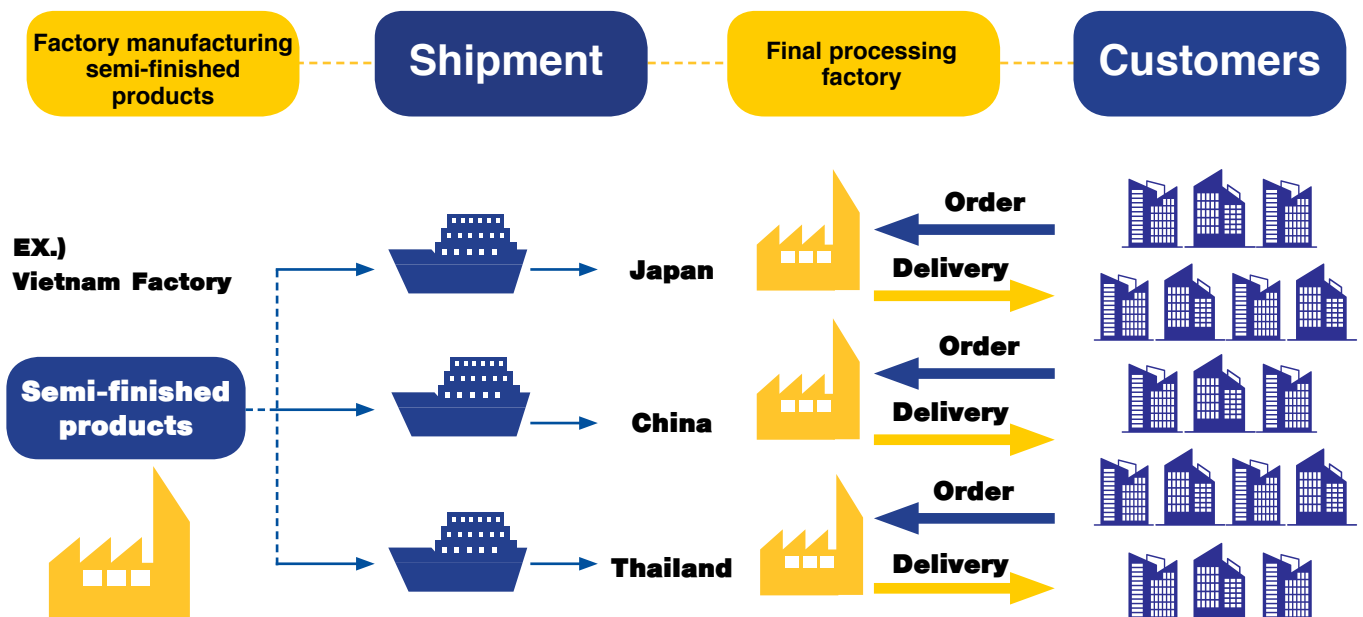


We mass produce semi-finished products at large-scale factories and complete final processing of these parts as ordered by customers in the market where they are required for use. This facilitates low cost, reliable and quick deliveries.



Semi-finished products → Finished products

⚙️ **Two contradictory competitive advantages which co-exist in tandem**



**Profit as a result of large-lot production**

Global production in optimal locations & economies of scale



**One-lot order production where time is of the essence**

Small lot, quick delivery, minimal inventory



# Distribution Business

VONA Business is MISUMI's distribution business, furnishes customers with a wide range of products. In addition to our traditional lineup of die and mold components and FA manufacturing equipment components, we are also expanding our lineup of third-party brand products, which include production auxiliary materials and consumables used at manufacturing sites, such as tools, gloves, and packaging. In 2010, the VONA platform was launched to enable one-stop purchasing of various parts used at manufacturing sites for those customers looking to efficiently procure parts, while tapping into the needs of parts manufacturers looking to expand sales avenues outside of their own sales network. We are expanding the number of third-party manufacturers for which we handle products, thereby fortifying our product lineup. In addition, we are accelerating the growth of this business on a global scale.

## Variation & One-stop by New Alliance

MISUMI brand mechanical components



Third party brand mechanical components

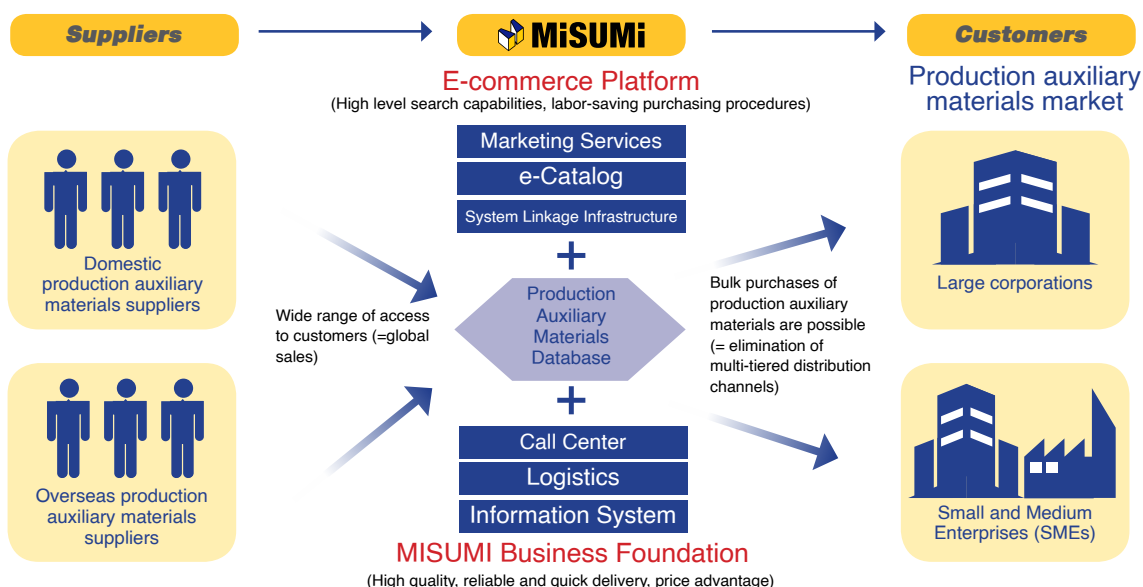


Tools and consumable supplies



### Strengths of the VONA business

VONA Business is the platform that connects suppliers with customers around the world.





# Product Category Overview



## Manufacturing Business

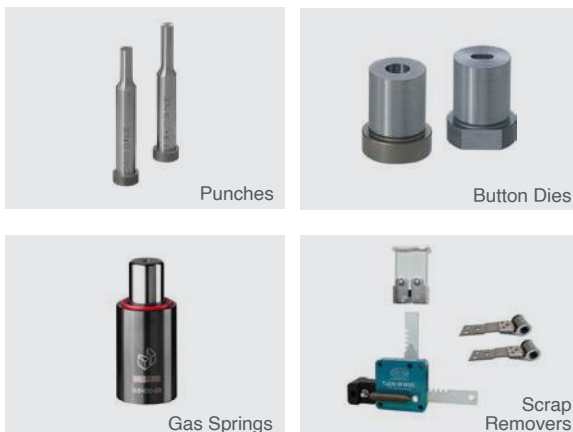
### Factory Automation Business

#### Automation Components

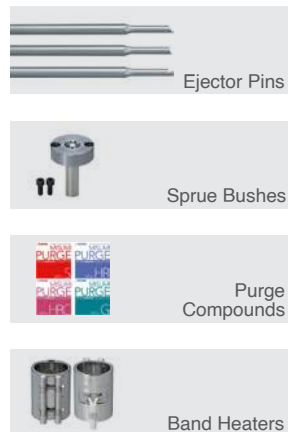


### Die Components Business

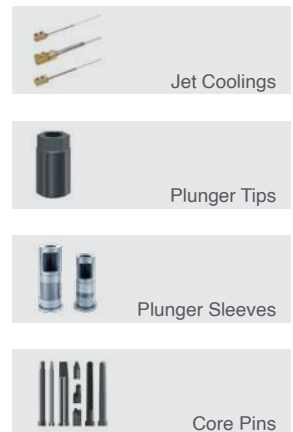
#### Press Components



#### Mold and Injection Components



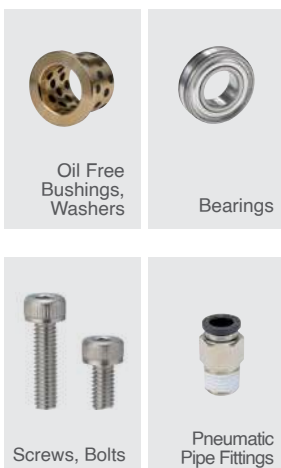
#### Die Casting Components



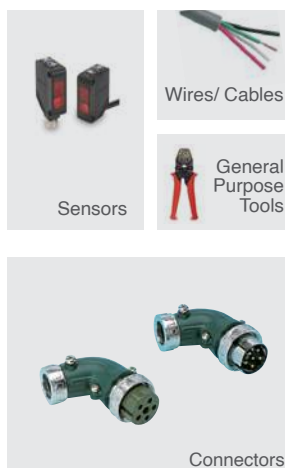
## Distribution Business

### VONA Business

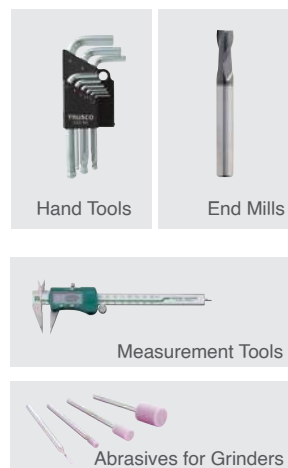
#### Automation Components, Fasteners



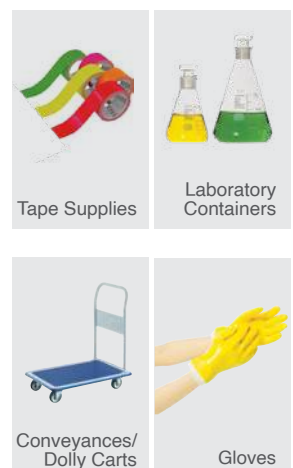
#### Wirings, Electrical & Controls



#### Cutting Tools, Processing Tools



#### Material Handling & Storage, Safety & General Supplies, Lab & Clean Room Supplies



# FACTORY AUTOMATION BUSINESS

## Linear Motion



Linear Shafts



Linear Bushings



Linear Guides



Ball Screws



Shaft Collars



Actuators

## Rotary Motion



Cam Followers,  
Roller Followers



Ball Bearings



Toothed Lock  
Washers for  
Bearings



Bearing Units



Bearings with  
Housings

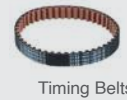


Rotary Shafts

## Rotary Power Transmission



Shaft Couplings



Timing Belts



Timing Pulleys



Gears



Keyless Bushings



Chains, Sprockets

## Conveyors & Material Handling



Ball Rollers



Belt Conveyors



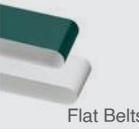
Wheel Conveyors



Roller Conveyors



Guide Rollers



Flat Belts

## Locating, Positioning, Jigs & Fixtures



Locating Pins



Clamps



Shims Flats



Flat Stoppers

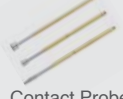


Bushings for  
Locating Pins



Indexing  
Plungers

## Inspection



Contact Probes



Manual Stages



Goniometer  
Stages



LED Lamps



Power  
Controllers



Pneumatic  
Modules

## Framing & Support



Aluminum Frames



Brackets



Aluminum  
Pipe Frames



Metal Joints



Stands for  
Factory Frames



Casters  
for Pipe Frames

## Casters, Leveling Mounts, Posts



Casters



Adjusters



Anchor Brackets



Angle Brackets



Wheels for  
Casters



Lifting Units

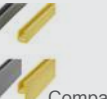
## Antivibration, Sound Proofing Materials, Safety Products



Sound Proofing



Antivibration  
Pads



Compact  
Trims



Edge Trims



Adhesive Tapes



Corner Trims

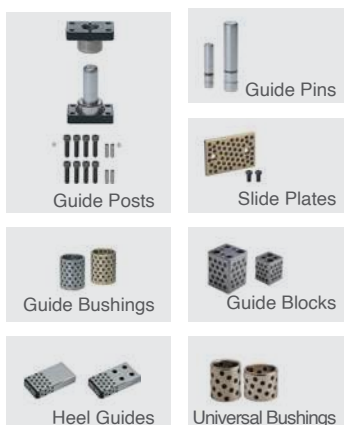


# DIE COMPONENTS BUSINESS

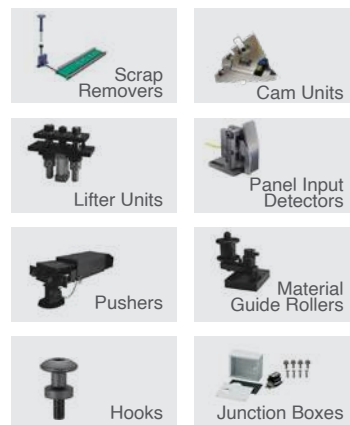
## Punches & Dies



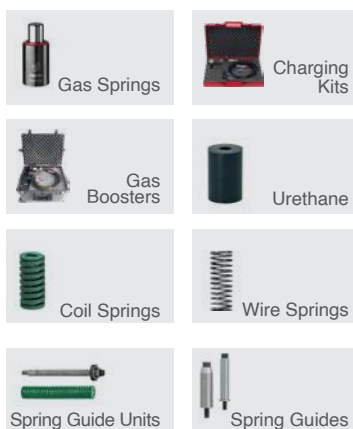
## Guide Components



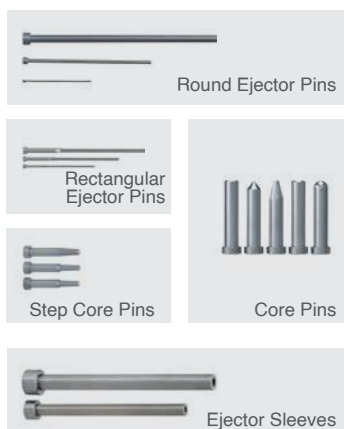
## Peripheral Components



## Springs



## Pins Components



## Heating Components



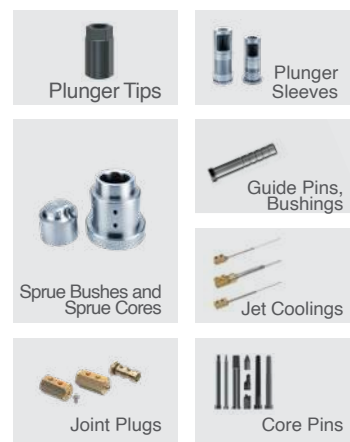
## Cooling Components



## Injection & Maintenance



## Die Casting Components





## Automation Components, Fasteners


**OILES**

Oil Free Bushings


**NTN, NSK**

Bearings


**KITZ**

Valves


**SUNCO**

Screws, Bolts


**TAKIGEN**

Catches


**CHIYODA**

Tubes


**NBK, IMAO**

Levers


**PISCO**

Pneumatic Pipe Fittings

## Wirings, Electrical & Controls


**OMRON**

Sensors


**OMRON**

Switches


**NANABOSHI**

Connectors


**FUJI ELECTRIC WIRE INDUSTRIES**

Wires/ Cables


**NICHIFU**

Crimps


**TAKACHI, OHM Electric**

Cable Glands


**LOBTEX**

General Purpose Tools


**OMRON**

Relays


**COSEL**

Switching  
Power Supplies

**SANWA**

Measuring Devices

## Cutting Tools, Processing Tools


**OSG**

End Mills


**NACHI**

Drill Bits


**YAMAWA**

Screw-Hole Related Tools


**TUNGALOY,  
BIG DAISHOWA SEIKI**

Milling Cutter Inserts/ Holders


**NIIGATA SEIKI**

Measurement Tools


**YANASE**

Abrasives for Grinders


**TONE, SUPER TOOL**

Hand Tools

## Material Handling & Storage, Safety & General Supplies, Lab & Clean Room Supplies


**NITTO**

Tape Supplies


**HELLERMANN TYTON**

Cable Ties


**TRUSCO**

Conveyances/ Dolly Carts


**TRUSCO**

Lifters/ Hand Pallets


**SEKISUI**

Container Pallets


**ESCO, HHH**

Suspended Clamps


**SHOWA GLOVE**

Gloves


**MIDORI ANZEN**

Safety Goggles/ Face Shields


**TANIZAWA**

Helmets


**TGK**

Laboratory Containers



# 5 Benefits of MISUMI

## 1. One-Stop Shop Service

MISUMI offers quick, hassle free, one-stop shop service to save your time.



## 2. On Time Delivery, Fast Delivery

On time and fast for every single brands.  
On time delivery guarantee at 99.96%.



## 3. Free Delivery, No MOQ

No need to pay delivery cost\*.  
Unlimited number of pieces or minimum price of order.



## 4. Easy to Search, Easy to Buy

- Search with Item code
- Search with Item name or brand
- Choose item from picture in item group



*Not good at searching?  
It's not your problem any more!*

## 5. Please contact us

We are available to assist on any matters.

### Technical Support



- › Give advice on How to choose items
- › Compare item code
- › Item information
- › Technical information/3D CAD

### Customer Service



- › Adjust delivery date
- › Change your ordering
- › Give advice on How to use e-Catalog
- › Give advice on How to ordering online

\*Delivery fee may be applicable for some overseas markets. Contact MISUMI in your country for more information.



# 7 Million

Products

# 2,000

Brands

# 50,000

Stock Items



## How to Contact

Customer Service

Tel : +65-6733-7211

Email : [cs@misumi.com.sg](mailto:cs@misumi.com.sg)

Office Hours

Monday–Friday ( 9:00 am - 6:00 pm )

Saturday ( 9:00 am - 3:00 pm )

Sunday (Closed)

\*Refers to Local Time.

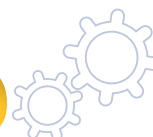


Singapore Office:

331 North Bridge Road, #07-02 Odeon 331,  
Singapore 188720



Homepage: <https://sg.misumi-ec.com/>







# 16 Million

Products

# 2,650

Brands

# 200,000

Stock Items

## How to Contact

### Customer Service

Tel : +66-33-684-730

Email : [cs@misumi.co.th](mailto:cs@misumi.co.th)

### Office Hours

Monday-Saturday ( 8:00 am - 6:00 pm )

Sunday & Public Holiday (Closed)

\*Refers to Local Time.



### Head Office:

300/24 Moo 1, Eastern Seaboard Industrial Estate, Soi 5, T.Tasith, A.Pluakdaeng, Rayong 21140, Thailand



### Bangkok Office:

4345 Bhiraj Tower at BITEC, 24th Floor, Room No. 2404-2410, Sukhumvit Road, Bang Na Tai, Bang Na, Bangkok 10260, Thailand



### Logistics Center:

WHA Logistics Park 4, 64/252-253 Moo 4, Eastern Seaboard Industrial Estate, T.Pluakdaeng, A.Pluakdaeng, Rayong 21140, Thailand



### Solution Center:

333/131-132, Moo 3, T.Bowin, A.Sriracha, Chonburi 20230, Thailand



**Homepage:** <https://th.misumi-ec.com/>





Gurugram Head Office & Warehouse



Pune Warehouse



Bengaluru Warehouse

# 6 Million

Products

# 2,500+

Brands

# 50,000+

Stock Items

## How to Contact

### Customer Service

Tel : +91-124-468-8800

Email : [cs@misumi.co.in](mailto:cs@misumi.co.in)

### Office Hours

Monday–Saturday (9:00 am - 5:30 pm)

Sunday & Public Holiday (Closed)

### Gurugram Head Office and Warehouse

Plot no 31, Electronic City,  
Phase IV, Udyog Vihar, Sec-18,  
Gurugram, Haryana, 122016

### Bengaluru Sales Office and Warehouse

Sy Nos.92P,93P to 99P of Iggalur  
Village, Attibele Hobli, Anekal Taluk,  
Bengaluru Urban District, 562107

### Pune Sales Office and Warehouse

Gate No 98/3, Post Kuruli, Murhe  
Vasti, Taluka Khed Dist- Pune,  
Maharashtra, 410501

### Ahmedabad Sales Office

1st & 2nd Floor, RE11, Iscon,  
Ambli Rd, Ambli, Ahmedabad,  
Gujarat, 380058

### Chennai Sales Office

920A, Plot No. 1, 10th Floor,  
Olympia Technology Park, Guindy,  
Chennai, Tamil Nadu, 600032



**Homepage :** <https://in.misumi-ec.com/>







# MISUMI

MALAYSIA SDN BHD

201001035654 (919578-T)

## 7 Million

Products

## 2,000

Brands

## 50,000

Stock Items



### How to Contact

#### Customer Service

Tel : +60-3-7890-6399

Email : cs@misumi.com.my

#### Office Hours

Monday–Friday ( 9:00 am - 6:00 pm )

Saturday ( 9:00 am - 1:00 pm )

Sunday & Public Holiday (Closed)

\*Refers to Local Time.



#### Malaysia Office:

BO2-C-08, Menara 3, KL Eco City, No. 3,  
Jalan Bangsar,  
59200 Kuala Lumpur, Malaysia



Homepage: <https://my.misumi-ec.com/>



**8.3 Million**

Products

**4,200**

Brands

**68,800**

Stock Items

**How to Contact****Customer Service**

Tel : +62-21-8984-0008

Fax : +62-21-8984-0007

Email : cs@misumi.co.id

**Office Hours**

Monday-Friday ( 8:30 am - 5:30 pm )

Saturday ( 8:30 am - 3:00 pm )

Sunday &amp; Public Holiday (Closed)

\*Refers to Local Time.

**Jakarta Office:**

Menara Karya, LT. 28. JL. H.R. Rasuna Said Kav  
1-2, Kuningan, Jakarta, Selatan 12950, Indonesia

**Cikarang Office:**

Jababeka Industrial Estate I, Jl. Jababeka XIIB Blok W27,  
Cikarang Utara Bekasi, 17530 Indonesia

**Homepage:** <https://id.misumi-ec.com/>



**8 Million**

Products

**3,000**

Brands

**110,000**

Stock Items

**How to Contact****Customer Service**

Tel : +84-222-361-1555

Email : cs@misumi.com.vn

Zalo chat : scan QR code

**Office Hours**

Monday-Saturday ( 8:00 am - 5:00 pm )

Sunday &amp; Public Holiday (Closed)

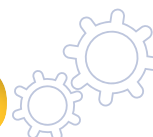
\*Refers to Local Time.

**Hanoi Head Office:**

Lot No.15, TS11 Road, Tien Son Industrial Park,  
Hoan Son commune, Tien Du District,  
Bac Ninh province, Vietnam

**Ho Chi Minh office:**

Office: Room 901, 9th Floor Sacom Chip Sang Bldg,  
Lot T2-4, D1 St, SHTP, Tan Phu ward, Dist.9, HCM

**Homepage:** <https://vn.misumi-ec.com/>

# MISUMI Catalog Channel

To ensure our customers' conveniences, MISUMI EC platform has been on continuous advancement and innovation.

## 1. Paper Catalog

Select products from a paper catalog and place order online

### Catalogs



## 2. e-catalog



Operation of E-Commerce Sites in **11 Languages** in **16 Countries**

## 3. Mobile Application

MISUMI proprietary application is available for both Android and iOS devices





# e-catalog Guideline

## How to Register

Visit our website in your country

Click **"New User"** or **"Register"** button



1. Input Information 2. Confirm Information 3. Temporary Registration Submitted 4. Confirm E-mail 5. Registration Submitted

Please fill in all required fields before submitting the form. \*Mandatory  
Kindly be informed that MISUMI does not sell to individuals for personal use (with exception of schools, research institutes, government bodies and welfare organizations).

### Login Information

E-mail *	<input type="text" value="E.g.: purchase@misiuri.com"/> <input type="text" value="confirm E-mail"/> <input type="text" value="E.g.: purchase@misiuri.com"/>
Login User ID (E-mail) *	<input type="text" value="E.g.: purchase@misiuri.com"/> <input type="button" value="Use E-mail as Login ID"/>
Password *	<input type="text" value="E.g.: mmpw09"/> <input type="text" value="confirm password"/> <input type="text" value="E.g.: mmpw09"/>

\*Between 4 to 15 characters.  
\*Please do not use your Login ID as password.  
\*Case-sensitive



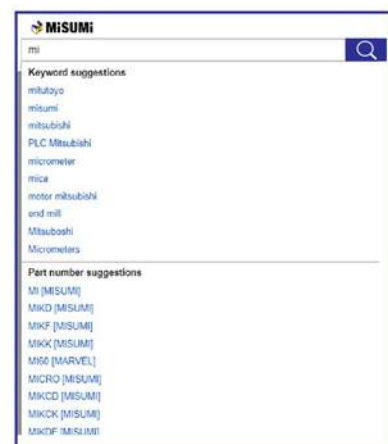
Fill in your registration form completely

Enjoy the benefits of MISUMI Customer

## How to Search



Find Product Easier  
by Showing Item and Brand Suggestion

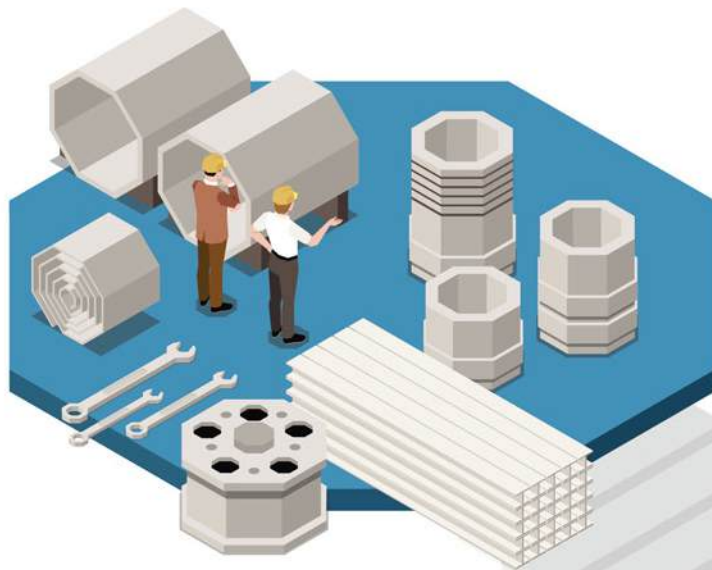


Input the search term / word into the "Search" box

The system will recommend the products. Choose product based on your needs.

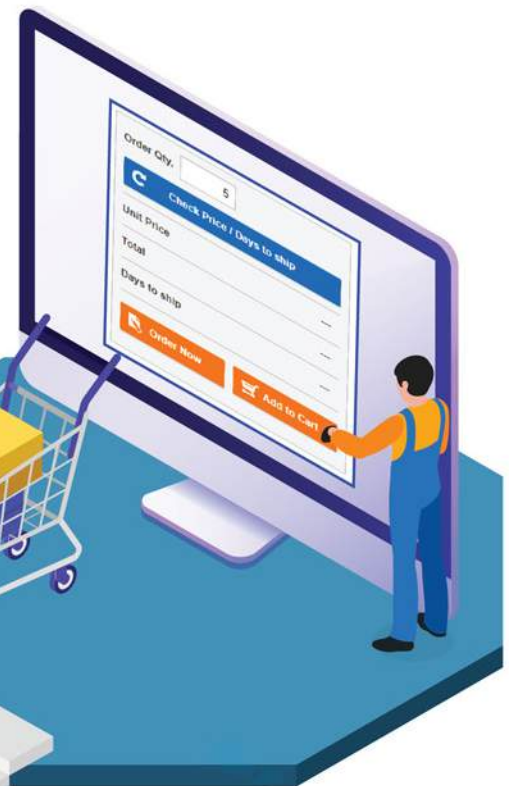
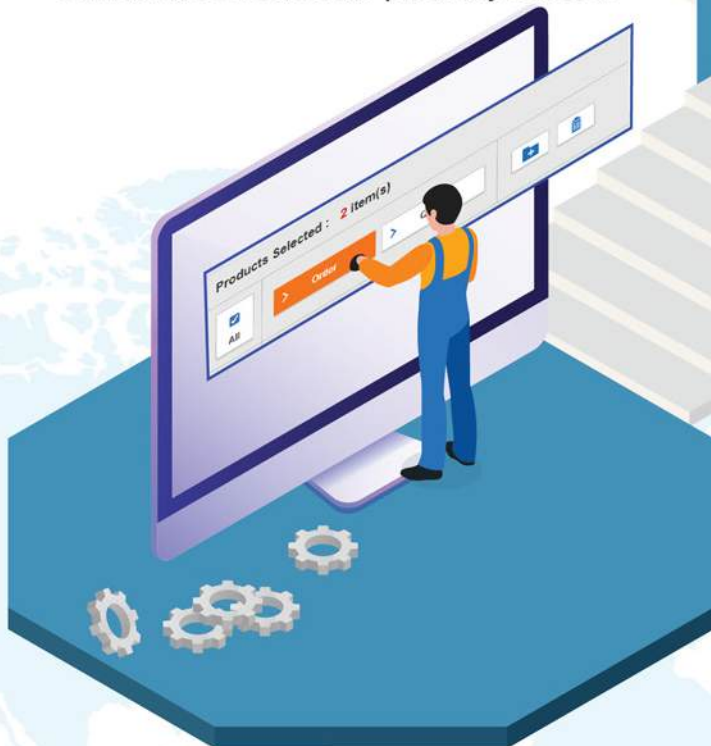
# e-catalog Guideline

## Product Ordering Flow



### Product Selection

Visit our website in your country, log in.  
Search and Select for the product you need.



### Add to cart

Click "Add to Cart" icon on the product page to add a product to the cart

### Request for Quotation or Ordering

Select the product and Click "Order" or "Quote" button at top of Cart page

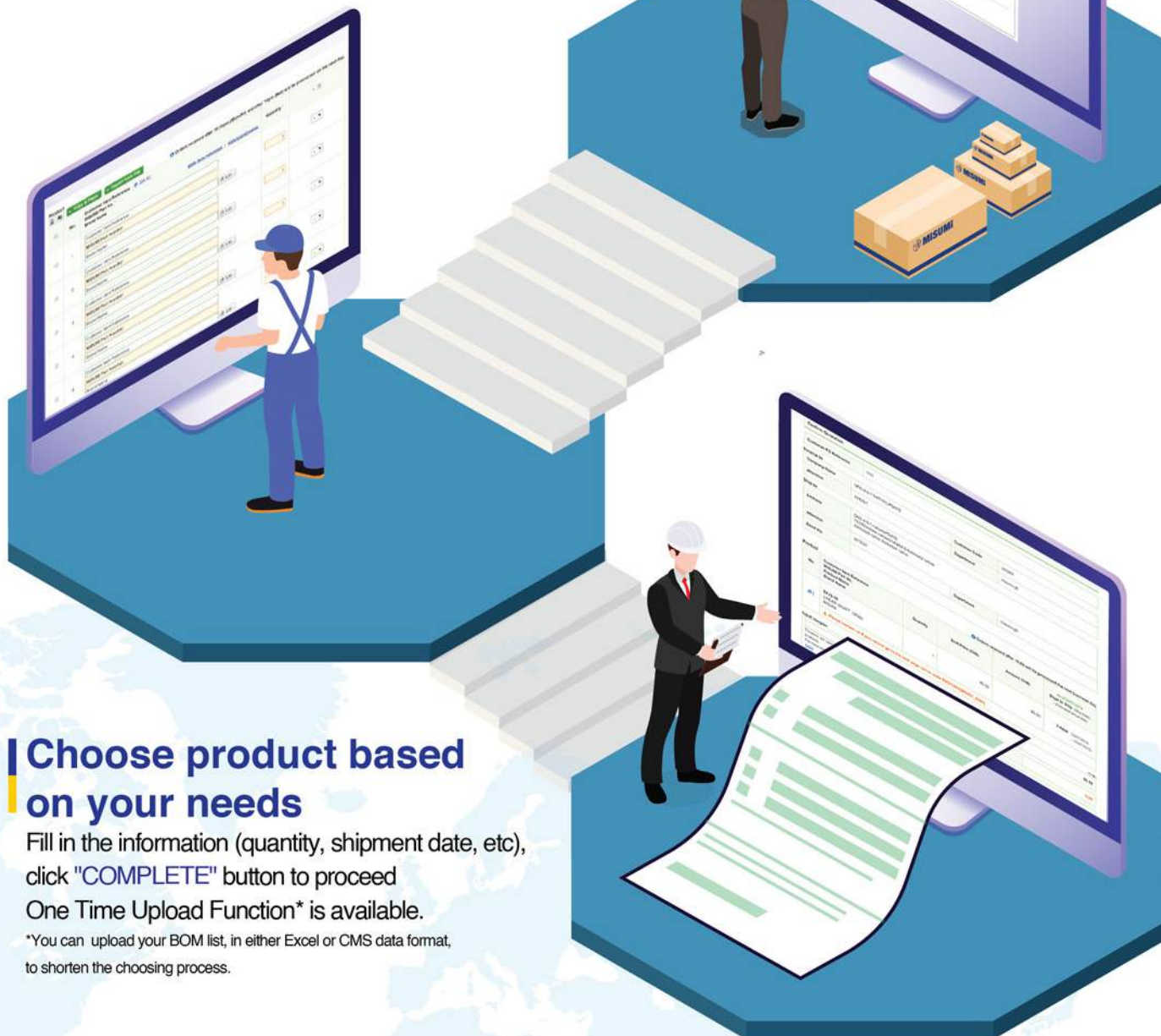


# e-catalog Guideline

## Quotation & Ordering

### Visit our Website in your country

log in, and Click "Quote" or "Order" button on right side.



### Choose product based on your needs

Fill in the information (quantity, shipment date, etc), click "COMPLETE" button to proceed  
One Time Upload Function\* is available.

\*You can upload your BOM list, in either Excel or CMS data format, to shorten the choosing process.

### The quotation /order

is ready to print now !!

Enjoy our on time and fast delivery service.

# Global Network







Since fiscal year 2002, which is when the new management structure came into effect, MISUMI Group started full-fledged global expansion. In order to establish the MISUMI QCT business model overseas, enhancing international operations by expanding sales offices, manufacturing sites and logistics sites in tandem.

At present, we are operating a global network with 66 sales offices, 17 logistics sites, and 22 manufacturing sites, mainly in Asia, the Americas and Europe. We now have an overseas sales ratio of over 45% and we are growing as a global company.



**66** SALES OFFICES  
**17** LOGISTICS SITES  
**22** MANUFACTURING SITES



**MISUMI Group Inc./MISUMI Corporation**  
 Iidabashi First Building, 5-1, Koraku 2-chome,  
 Bunkyo-ku, Tokyo 112-8583, Japan  
 T. +81-3-5805-7050 (main line) F. +81-3-5805-7458  
<https://www.misumi.co.jp/english/>

**MISUMI USA, Inc.**  
 1475 E Woodfield Rd, Ste. 1300  
 I Schaumburg, IL 60173, U.S.A.  
 T. +1-847-843-9105 F. +1-847-843-9107  
<https://us.misumi-ec.com/>

**MISUMI TAIWAN CORP.**  
 9F-1, No. 126 Nanjing East Road, Sec. 4,  
 Taipei 10595, Taiwan  
 T. +886-2-2570-3766 F. +886-2-2570-3767  
<https://tw.misumi-ec.com/>

**MISUMI SOUTH EAST ASIA PTE. LTD.**  
 331 North Bridge Road, #07-02 Odeon 331,  
 Singapore 188720  
 T. +65-6733-7211  
<https://sg.misumi-ec.com/>

**MISUMI E.A. HK LTD.**  
 Unit 202 2/F, Malaysia Building, 50 Gloucester Road,  
 Wanchai, Hong Kong  
 T. +852-8303-2781 F. +852-8303-2782

**MISUMI (THAILAND) CO., LTD.**  
 300/24 Moo 1, Eastern Seaboard Industrial Estate,  
 Soi 5, Tambol Tasith, Amphur Pluakdaeng, Rayong  
 Province 21140, Thailand  
 T. +66-33-684-730  
<https://th.misumi-ec.com/>

**MISUMI KOREA CORP.**  
 1103 World Trade Center, 511, Yeongdong-daero,  
 Kangnam-Gu, Seoul 06164, Korea  
 T. +82-2-551-3611 F. +82-2-551-4811  
<https://kr.misumi-ec.com/>

**MISUMI Europa GmbH**  
 St Martin Tower Wing, Franklinstrasse 61-63,  
 60486 Frankfurt a.M.  
 T. +49(0)69-668171-0 F. +49(0)69-668171-360  
<https://www.misumi-europe.com/>

**MISUMI (CHINA) PRECISION MACHINERY TRADING CO., LTD.**  
 10th Floor, 1st Tower, Enterprise Centre, 128 Tianmu  
 Road West, Jing'an District, Shanghai 200070, China  
 T. +86-21-6391-7080 F. +86-21-6391-7602  
<https://www.misumi.com.cn>

**MISUMI INDIA Pvt. Ltd.**  
 Plot no 31, Electronic City, Phase IV, Udyog Vihar,  
 Sec-18, Gurugram, Haryana, 122016  
 T. +91-12-4468-8800  
<https://in.misumi-ec.com/>

**MISUMI MALAYSIA SDN. BHD.**  
 BO2-C-08, Menara 3, KL Eco City, No. 3,  
 Jalan Bangsar, 59200 Kuala Lumpur, Malaysia  
 T. +60-3-7890-6399  
<https://my.misumi-ec.com/>

**PT. MISUMI INDONESIA**  
 Menara Karya, LT. 28. Jl. H.R. Rasuna Said Kav 1-2,  
 Kuningan Jakarta, Selatan 12950, Indonesia  
 T. +62-21-8984-0008 F. +62-21-8984-0007  
<https://id.misumi-ec.com/>

**MISUMI VIETNAM CO., LTD.**  
 Lot 15, Road TS11, Tien Son Industrial Park,  
 Hoan Son Commune,  
 Tien Du District, Bac Ninh Province, Vietnam  
 T. +84-222-361-1555  
<https://vn.misumi-ec.com/>

**MISUMI MEXICO, S. DE R.L. DE C.V.**  
 Av. De Las Fuentes 74, Int. B  
 Parque Industrial FINSA  
 El Marques, Queretaro, 76246, Mexico  
 T. +52-442-672-7661  
<https://www.misumimex.com>



# MISUMI offers

## *One-Stop Shop Service*

providing “Time Value” to customers by pursuing “Reliable, Quick Delivery”. All varieties of FA manufacturing equipment parts, die and mold components, tools, consumables and MTO products are available.

MISUMI provides part types and size variations configurable at the micron-level. We save customers valuable time by lessening the burden related to designing parts, procurement, maintenance and so on. Time saved can be better spent by our customers toward intellectual production such as product concept development and design work.

MISUMI offers a service that makes customer’s production material procurement process efficient by harnessing [the MISUMI QCT Model, which aims to deliver high quality \(Q\) at low cost \(C\) with reliably quick delivery times \(T\), to serve our customers.](#)

This is MISUMI’s value proposition of “Time Strategy”.

MISUMI is always ready to meet the needs and provide better services to continue assisting your company to grow and develop further.



It's all about TIME

